

5/3-way solenoid valve, G1/8 - Series 3

Product code: 388-011-02

Datasheet creation date: 10/03/2025 11:01

Check the most updated document online [click here](#)

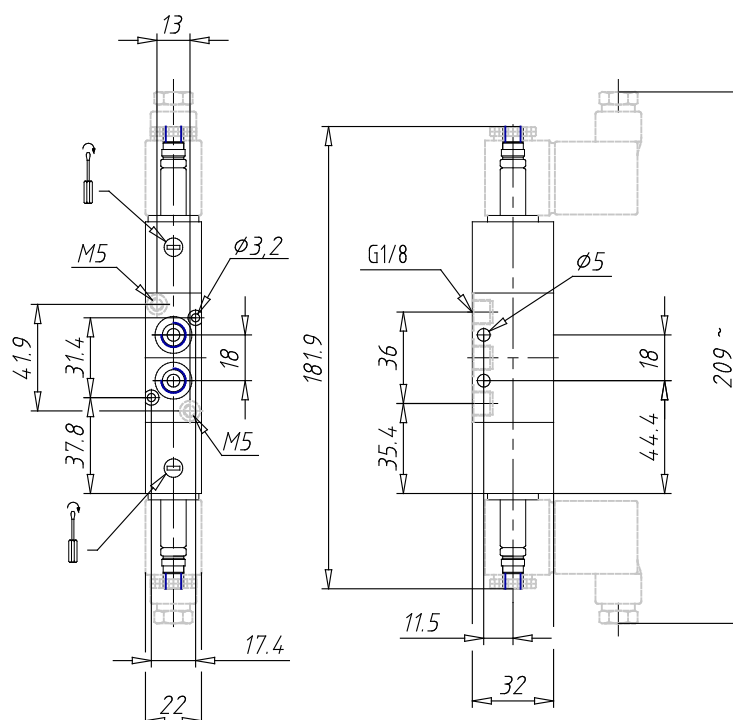


TECHNICAL DATA

Mod.	388-011-02
Function	5/3CP
Flow rate (NI/min)	700
Operating pressure	2 ÷ 10
Pilot pressure	-
Manual override	= bistabile standard
Dimensions of the solenoid	No solenoid
Solenoid voltage	

5/3-way solenoid valve, G1/8 - Series 3

Product code: 388-011-02



DIMENSIONS

Mod.	388-011-02
Function	5/3CP
Flow rate (NI/min)	700
Operating pressure	2 ÷ 10
Pilot pressure	-
Manual override	= bistabile standard
Dimensions of the solenoid	No solenoid
Solenoid voltage	