

2 x 3/2-way solenoid valve, G1/8 - Series 3

Product code: 398D-015-02-G7H

Datasheet creation date: 10/03/2025 11:02

Check the most updated document online [click here](#)

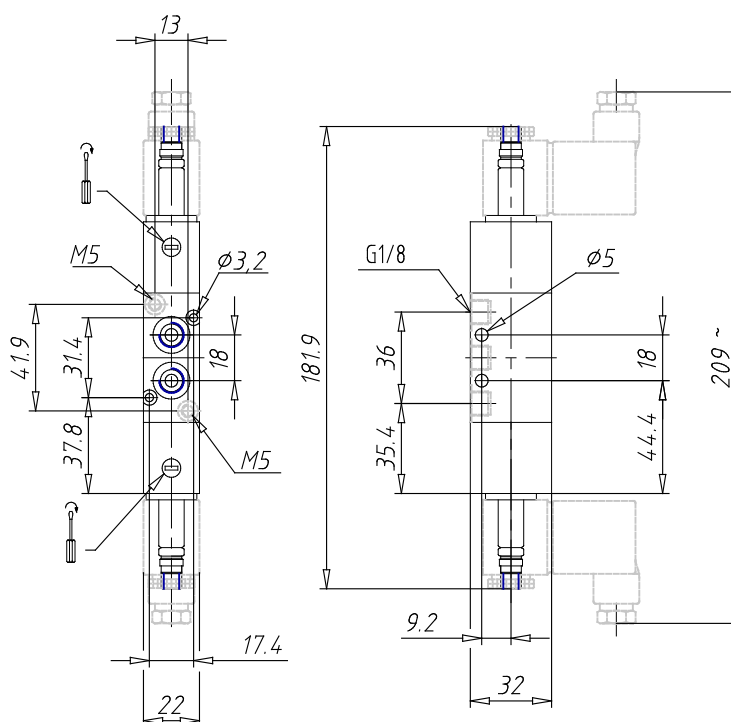


TECHNICAL DATA

Mod.	398D-015-02
Function	1 x 3/2 NC + 1 x 3/2 NO
Flow rate (NI/min)	700
Operating pressure	2,5 ÷ 10
Pilot pressure	-
Manual override	= bistable standard
Dimensions of the solenoid	G7 = PA / 22 x 22
Solenoid voltage	H = 12 V DC

2 x 3/2-way solenoid valve, G1/8 - Series 3

Product code: 398D-015-02-G7H



DIMENSIONS

Mod.	398D-015-02
Function	1 x 3/2 NC + 1 x 3/2 NO
Flow rate (NI/min)	700
Operating pressure	2,5 ÷ 10
Pilot pressure	-
Manual override	= bistable standard
Dimensions of the solenoid	G7 = PA / 22 x 22
Solenoid voltage	H = 12 V DC