

## 2 x 3/2-way solenoid valve, G1/8 - Series 3

Product code: 398D-015-02-U77

Datasheet creation date: 10/03/2025 11:02

Check the most updated document online [click here](#)

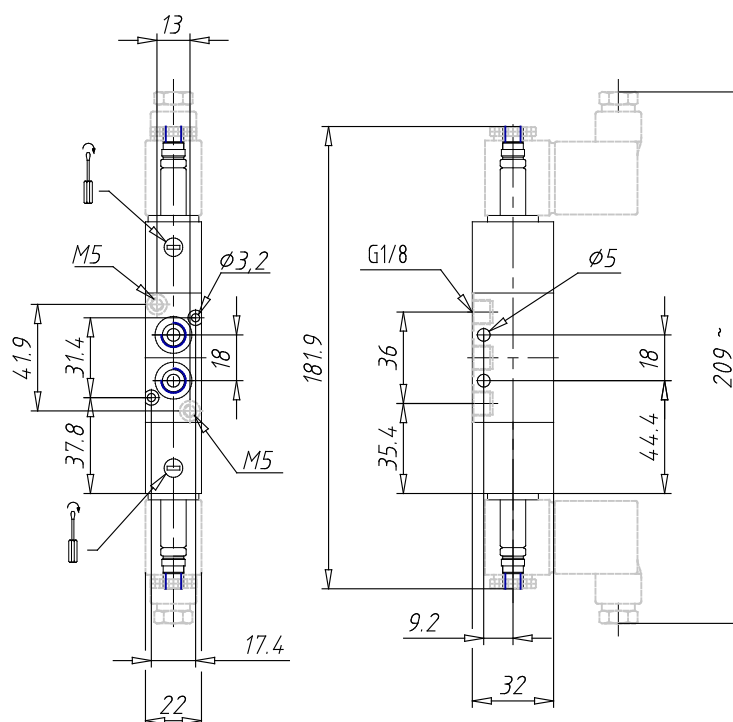


### TECHNICAL DATA

<b>Mod.</b>	398D-015-02
<b>Function</b>	1 x 3/2 NC + 1 x 3/2 NO
<b>Flow rate (NI/min)</b>	700
<b>Operating pressure</b>	2,5 ÷ 10
<b>Pilot pressure</b>	-
<b>Manual override</b>	= bistable standard
<b>Dimensions of the solenoid</b>	U7 = PET / 22 x 22
<b>Solenoid voltage</b>	7 = 24 V DC

## 2 x 3/2-way solenoid valve, G1/8 - Series 3

Product code: 398D-015-02-U77



### DIMENSIONS

<b>Mod.</b>	398D-015-02
<b>Function</b>	1 x 3/2 NC + 1 x 3/2 NO
<b>Flow rate (NI/min)</b>	700
<b>Operating pressure</b>	2,5 ÷ 10
<b>Pilot pressure</b>	-
<b>Manual override</b>	= bistable standard
<b>Dimensions of the solenoid</b>	U7 = PET / 22 x 22
<b>Solenoid voltage</b>	7 = 24 V DC