

2 x 3/2-way solenoid valve, G1/8 - Series 3

Product code: 398D-015-02IL

Datasheet creation date: 10/03/2025 11:02

Check the most updated document online [click here](#)

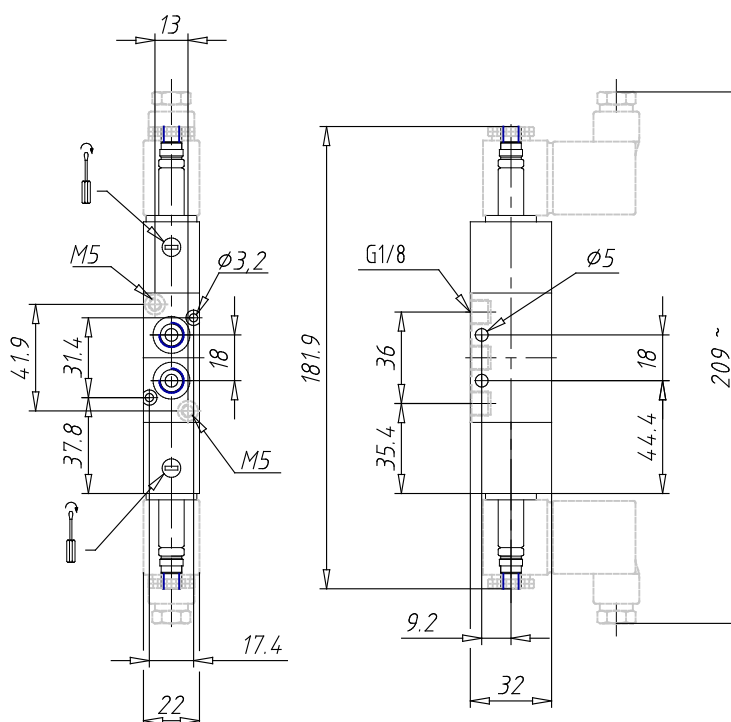


TECHNICAL DATA

| | |
|-----------------------------------|---|
| Mod. | 398D-015-02 |
| Function | 1 x 3/2 NC + 1 x 3/2 NO |
| Flow rate (NI/min) | 700 |
| Operating pressure | 2,5 ÷ 10 |
| Pilot pressure | - |
| Manual override | IL = bistable, lever type (available on demand) |
| Dimensions of the solenoid | No solenoid |
| Solenoid voltage | |

2 x 3/2-way solenoid valve, G1/8 - Series 3

Product code: 398D-015-02IL



DIMENSIONS

| | |
|-----------------------------------|--|
| Mod. | 398D-015-02 |
| Function | 1 x 3/2 NC + 1 x 3/2 NO |
| Flow rate (NI/min) | 700 |
| Operating pressure | 2,5 ÷ 10 |
| Pilot pressure | - |
| Manual override | IL = bistable, lever type (available on demand) |
| Dimensions of the solenoid | No solenoid |
| Solenoid voltage | |