

## 2 x 3/2-way solenoid valve, G1/8 - Series 3

Product code: 398D-E15-02

Datasheet creation date: 10/03/2025 11:02

Check the most updated document online [click here](#)

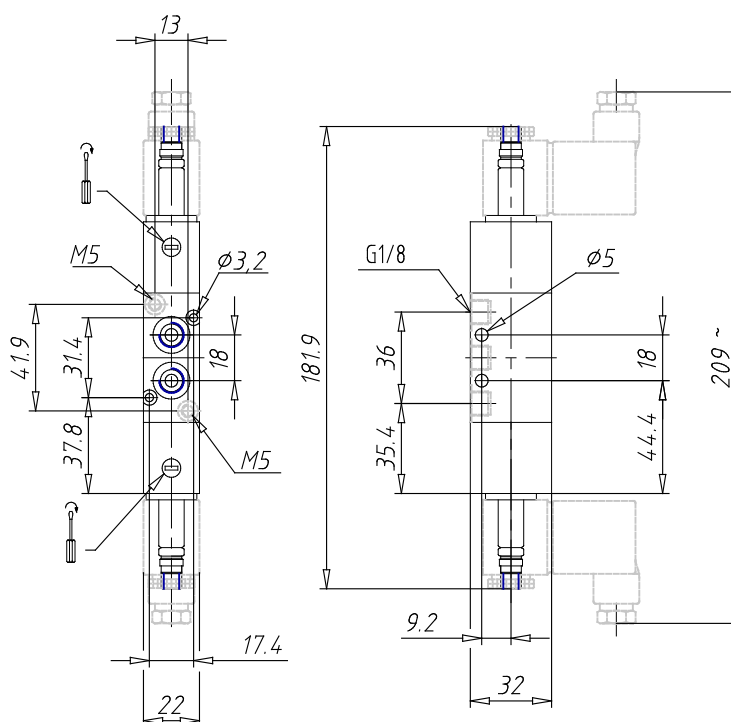


### TECHNICAL DATA

|                                   |                         |
|-----------------------------------|-------------------------|
| <b>Mod.</b>                       | 398D-E15-02             |
| <b>Function</b>                   | 1 x 3/2 NC + 1 x 3/2 NO |
| <b>Flow rate (NI/min)</b>         | 700                     |
| <b>Operating pressure</b>         | -0,9 ÷ 10               |
| <b>Pilot pressure</b>             | 2,5 ÷ 10                |
| <b>Manual override</b>            | = bistable standard     |
| <b>Dimensions of the solenoid</b> | No solenoid             |
| <b>Solenoid voltage</b>           |                         |

## 2 x 3/2-way solenoid valve, G1/8 - Series 3

Product code: 398D-E15-02



### DIMENSIONS

|                                   |                         |
|-----------------------------------|-------------------------|
| <b>Mod.</b>                       | 398D-E15-02             |
| <b>Function</b>                   | 1 x 3/2 NC + 1 x 3/2 NO |
| <b>Flow rate (NI/min)</b>         | 700                     |
| <b>Operating pressure</b>         | -0,9 ÷ 10               |
| <b>Pilot pressure</b>             | 2,5 ÷ 10                |
| <b>Manual override</b>            | = bistable standard     |
| <b>Dimensions of the solenoid</b> | No solenoid             |
| <b>Solenoid voltage</b>           |                         |