

Cylinders Series 42 - Series 42

Product code: 42M2N032A0190

Datasheet creation date: 08/03/2025 11:08

Check the most updated document online [click here](#)

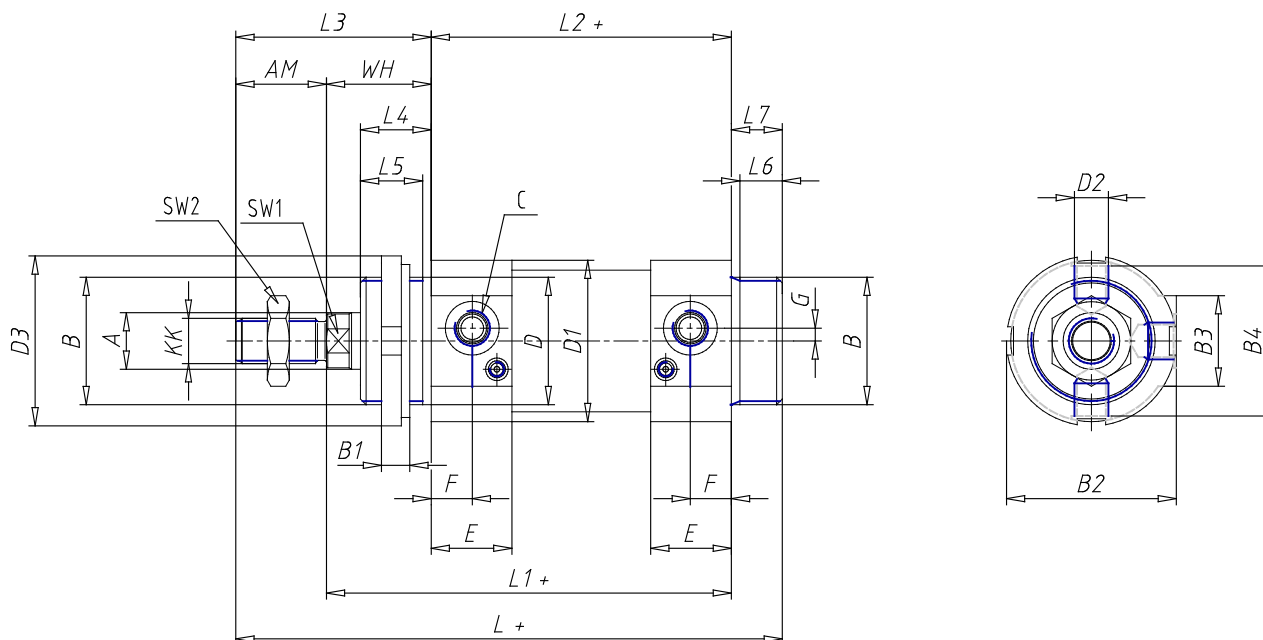


TECHNICAL DATA

| | |
|----------------------|-----------------------------------------------------------------------------|
| Series | 42 |
| Diameter (mm) | 32 |
| Version | M = standard magnetic |
| Operation | 2 = double-acting (front and rear cushions) |
| Materials | N = rod stainless steel AISI 420B; tube stainless steel AISI 304; NBR seals |
| Construction | A = standard (screw with ring V+ lock for nut for rod U) |
| Stroke type | variable |
| Stroke (mm) | 190 |

Cylinders Series 42 - Series 42

Product code: 42M2N032A0190



DIMENSIONS

| | |
|----------|----------|
| Ø A (mm) | 12 |
| KK | M10x1.25 |
| B | M30x1.5 |
| B1 (mm) | 8 |
| B2 (mm) | 41.5 |
| B3 (mm) | 28.0 |
| B4 (mm) | 36 |
| C | G1\8 |
| Ø D (mm) | 30 |
| D1 (mm) | 38 |
| D2 | M8x1 |
| D3 (mm) | 42 |
| E (mm) | 23.5 |
| F (mm) | 10.5 |
| G (mm) | 5.0 |
| SW1 (mm) | 10 |
| SW2 (mm) | 17 |
| AM (mm) | 22 |
| WH (mm) | 26 |
| L (mm) | 156 |
| L1 (mm) | 120 |
| L2 (mm) | 94 |
| L3 (mm) | 48 |

| | |
|-----------------------------|----|
| L4 (mm) | 18 |
| L5 (mm) | 15 |
| L6 (mm) | 11 |
| L7 (mm) | 14 |
| Cushion stroke front spring | 17 |
| Cushion stroke rear spring | 12 |