

## Cylinders Series 42 - Series 42

Product code: 42M2N050A0055

Datasheet creation date: 08/03/2025 11:19

Check the most updated document online [click here](#)

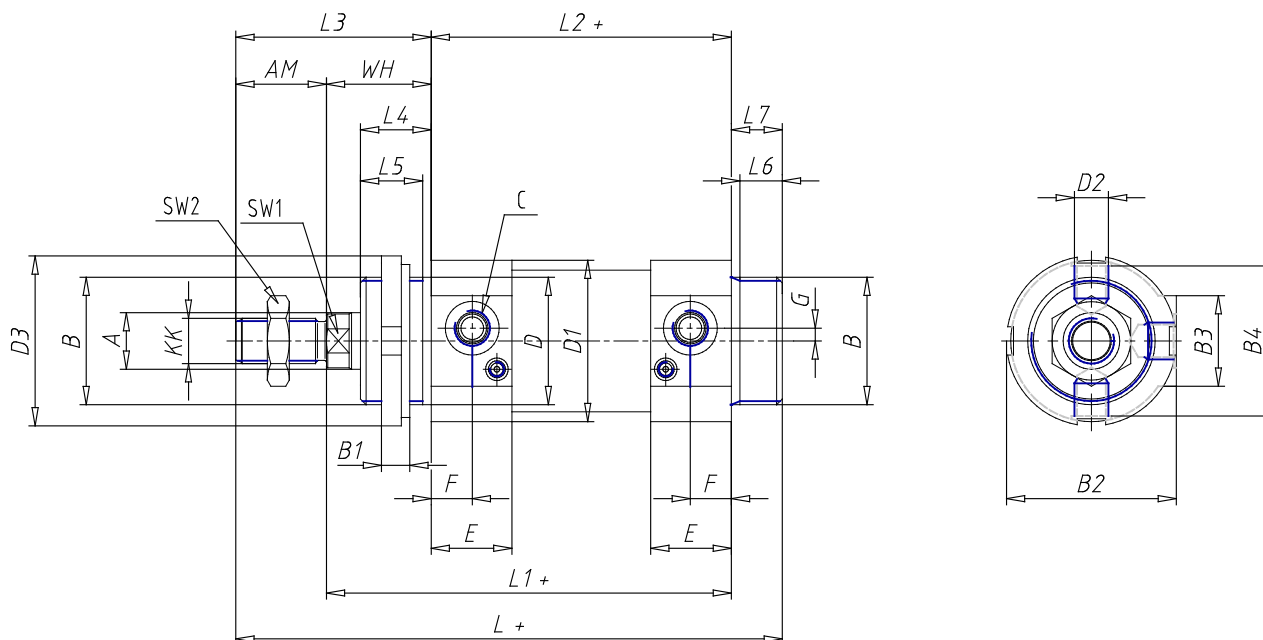


### TECHNICAL DATA

<b>Series</b>	42
<b>Diameter (mm)</b>	50
<b>Version</b>	M = standard magnetic
<b>Operation</b>	2 = double-acting (front and rear cushions)
<b>Materials</b>	N = rod stainless steel AISI 420B; tube stainless steel AISI 304; NBR seals
<b>Construction</b>	A = standard (screw with ring V+ lock for nut for rod U)
<b>Stroke type</b>	variable
<b>Stroke (mm)</b>	55

## Cylinders Series 42 - Series 42

Product code: 42M2N050A0055



### DIMENSIONS

Ø A (mm)	20
KK	M16x1.5
B	M45x1.5
B1 (mm)	10
B2 (mm)	58.5
B3 (mm)	32.0
B4 (mm)	54
C	G1\4
Ø D (mm)	45
D1 (mm)	57
D2	M12x1.5
D3 (mm)	60
E (mm)	28.5
F (mm)	14.5
G (mm)	4.5
SW1 (mm)	17
SW2 (mm)	24
AM (mm)	32
WH (mm)	37
L (mm)	193
L1 (mm)	143
L2 (mm)	106
L3 (mm)	69

L4 (mm)	25
L5 (mm)	22
L6 (mm)	15
L7 (mm)	18
Cushion stroke front spring	15
Cushion stroke rear spring	14