

## Cylinders Series 42 - Series 42

Product code: 42M2N050A0200

Datasheet creation date: 08/03/2025 11:20

Check the most updated document online [click here](#)

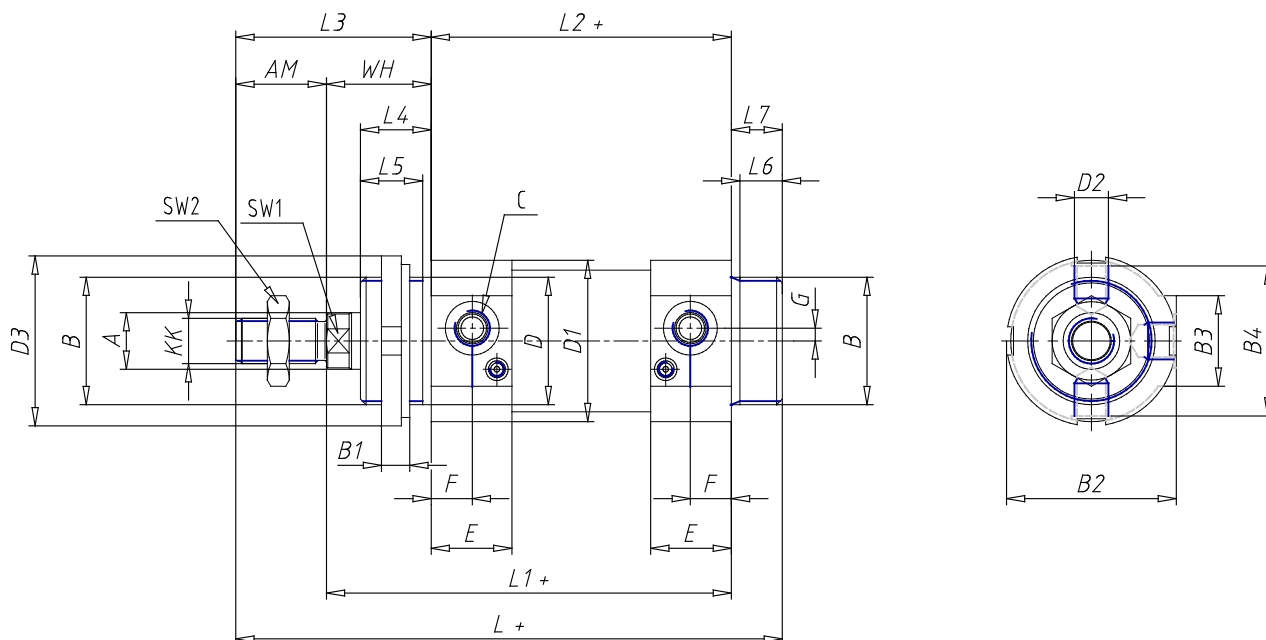


### TECHNICAL DATA

|                      |   |
|----------------------|---|
| <b>Series</b>        | 42  |
| <b>Diameter (mm)</b> | 50  |
| <b>Version</b>       | M = standard magnetic   |
| <b>Operation</b>     | 2 = double-acting (front and rear cushions)                                 |
| <b>Materials</b>     | N = rod stainless steel AISI 420B; tube stainless steel AISI 304; NBR seals |
| <b>Construction</b>  | A = standard (screw with ring V+ lock for nut for rod U)                    |
| <b>Stroke type</b>   | standard  |
| <b>Stroke (mm)</b>   | 200   |

## Cylinders Series 42 - Series 42

Product code: 42M2N050A0200



### DIMENSIONS

|          |         |
|----------|---------|
| Ø A (mm) | 20      |
| KK       | M16x1.5 |
| B        | M45x1.5 |
| B1 (mm)  | 10      |
| B2 (mm)  | 58.5    |
| B3 (mm)  | 32.0    |
| B4 (mm)  | 54      |
| C        | G1\4    |
| Ø D (mm) | 45      |
| D1 (mm)  | 57      |
| D2       | M12x1.5 |
| D3 (mm)  | 60      |
| E (mm)   | 28.5    |
| F (mm)   | 14.5    |
| G (mm)   | 4.5     |
| SW1 (mm) | 17      |
| SW2 (mm) | 24      |
| AM (mm)  | 32      |
| WH (mm)  | 37      |
| L (mm)   | 193     |
| L1 (mm)  | 143     |
| L2 (mm)  | 106     |
| L3 (mm)  | 69      |

|                             |    |
|-----------------------------|----|
| L4 (mm)                     | 25 |
| L5 (mm)                     | 22 |
| L6 (mm)                     | 15 |
| L7 (mm)                     | 18 |
| Cushion stroke front spring | 15 |
| Cushion stroke rear spring  | 14 |