

Cylinders Series 42 - Series 42

Product code: 42M2N050A1000

Datasheet creation date: 08/03/2025 11:21

Check the most updated document online [click here](#)

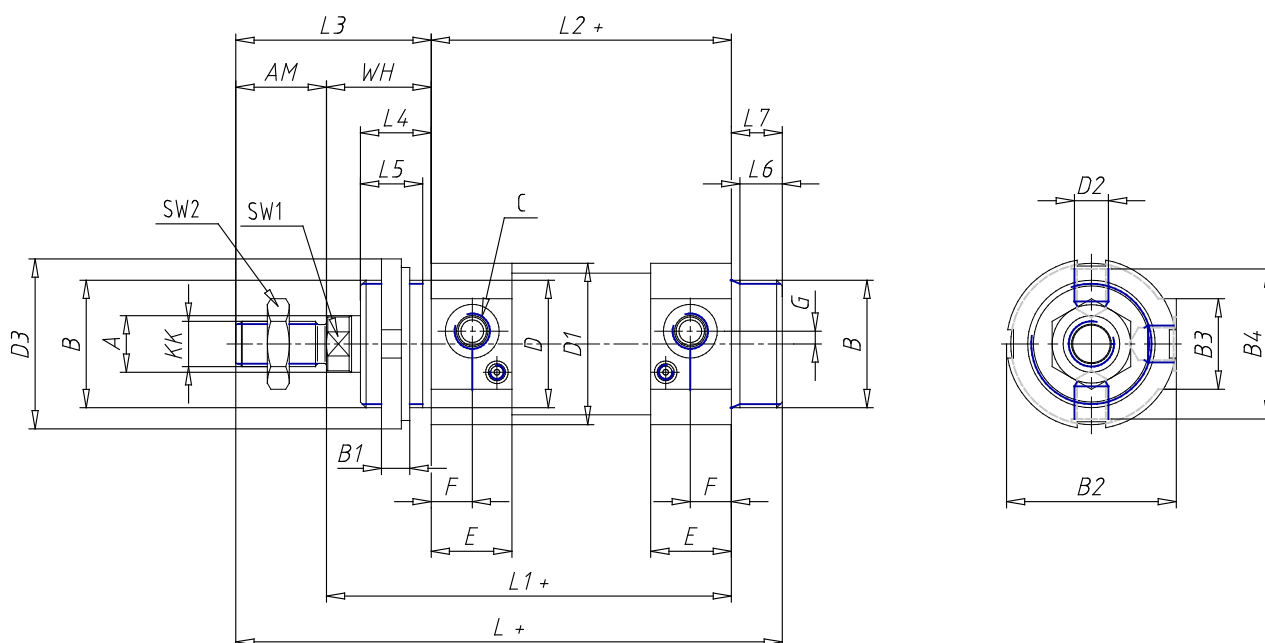


TECHNICAL DATA

Series	42
Diameter (mm)	50
Version	M = standard magnetic
Operation	2 = double-acting (front and rear cushions)
Materials	N = rod stainless steel AISI 420B; tube stainless steel AISI 304; NBR seals
Construction	A = standard (screw with ring V+ lock for nut for rod U)
Stroke type	variable
Stroke (mm)	1000

Cylinders Series 42 - Series 42

Product code: 42M2N050A1000



DIMENSIONS

Ø A (mm)	20
KK	M16x1.5
B	M45x1.5
B1 (mm)	10
B2 (mm)	58.5
B3 (mm)	32.0
B4 (mm)	54
C	G1\4
Ø D (mm)	45
D1 (mm)	57
D2	M12x1.5
D3 (mm)	60
E (mm)	28.5
F (mm)	14.5
G (mm)	4.5
SW1 (mm)	17
SW2 (mm)	24
AM (mm)	32
WH (mm)	37
L (mm)	193
L1 (mm)	143
L2 (mm)	106
L3 (mm)	69

L4 (mm)	25
L5 (mm)	22
L6 (mm)	15
L7 (mm)	18
Cushion stroke front spring	15
Cushion stroke rear spring	14