

Cylinders Series 42 - Series 42

Product code: 42M2N063A0038

Datasheet creation date: 08/03/2025 11:22

Check the most updated document online [click here](#)

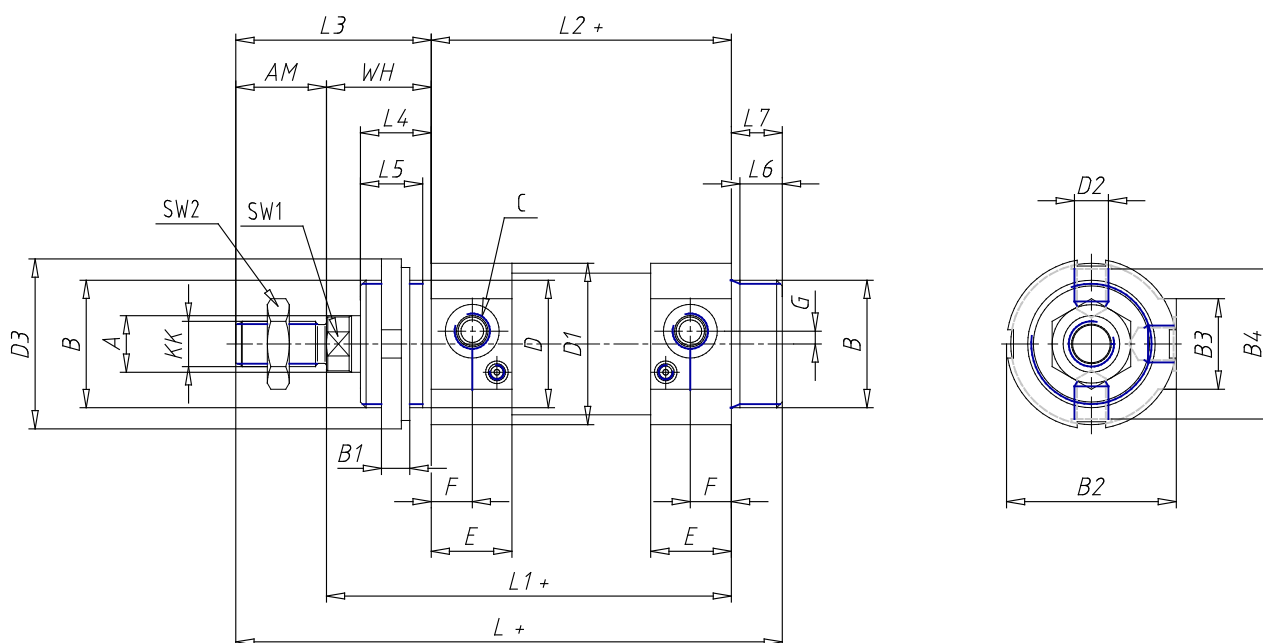


TECHNICAL DATA

Series	42
Diameter (mm)	63
Version	M = standard magnetic
Operation	2 = double-acting (front and rear cushions)
Materials	N = rod stainless steel AISI 420B; tube stainless steel AISI 304; NBR seals
Construction	A = standard (screw with ring V+ lock for nut for rod U)
Stroke type	variable
Stroke (mm)	38

Cylinders Series 42 - Series 42

Product code: 42M2N063A0038



DIMENSIONS

Ø A (mm)	20
KK	M16x1.5
B	M45x1.5
B1 (mm)	10
B2 (mm)	70.5
B3 (mm)	46.5
B4 (mm)	66
C	G3/8
Ø D (mm)	45
D1 (mm)	70
D2	M14x1.5
D3 (mm)	60
E (mm)	35.0
F (mm)	15.5
G (mm)	7.0
SW1 (mm)	17
SW2 (mm)	24
AM (mm)	32
WH (mm)	37
L (mm)	208
L1 (mm)	158
L2 (mm)	121
L3 (mm)	69

L4 (mm)	25
L5 (mm)	22
L6 (mm)	15
L7 (mm)	18
Cushion stroke front spring	17
Cushion stroke rear spring	16