

## Cylinders Series 42 - Series 42

Product code: 42M2N063A0300

Datasheet creation date: 08/03/2025 11:23

Check the most updated document online [click here](#)

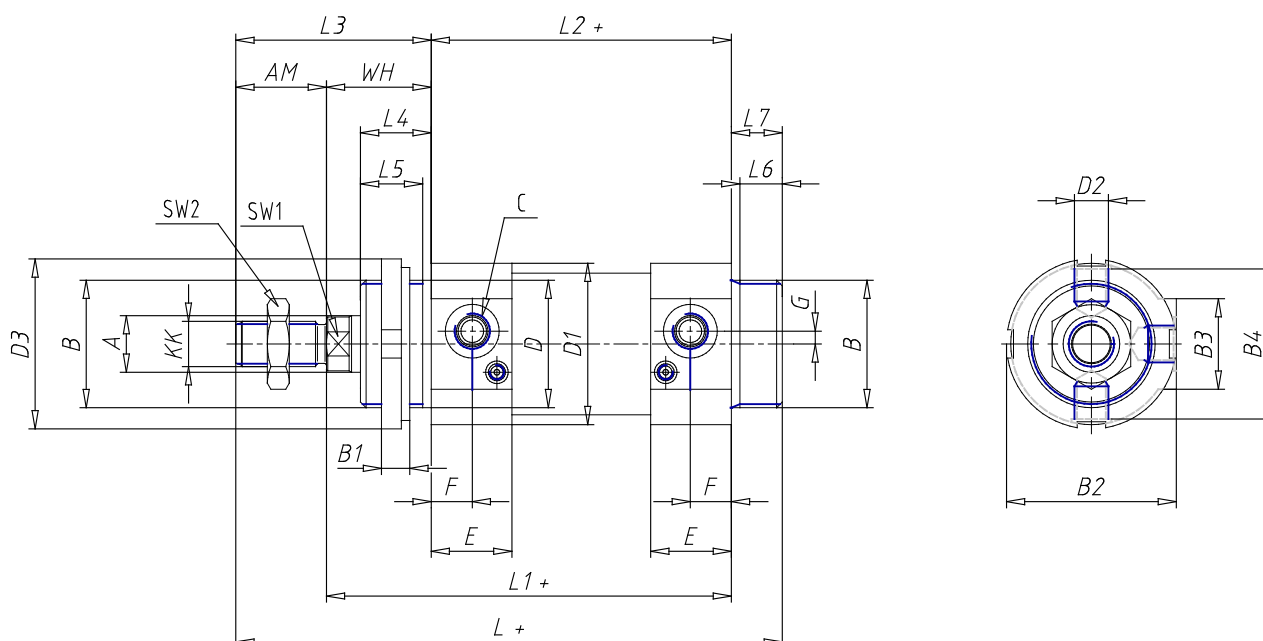


### TECHNICAL DATA

<b>Series</b>	42
<b>Diameter (mm)</b>	63
<b>Version</b>	M = standard magnetic
<b>Operation</b>	2 = double-acting (front and rear cushions)
<b>Materials</b>	N = rod stainless steel AISI 420B; tube stainless steel AISI 304; NBR seals
<b>Construction</b>	A = standard (screw with ring V+ lock for nut for rod U)
<b>Stroke type</b>	standard
<b>Stroke (mm)</b>	300

## Cylinders Series 42 - Series 42

Product code: 42M2N063A0300



### DIMENSIONS

Ø A (mm)	20
KK	M16x1.5
B	M45x1.5
B1 (mm)	10
B2 (mm)	70.5
B3 (mm)	46.5
B4 (mm)	66
C	G3/8
Ø D (mm)	45
D1 (mm)	70
D2	M14x1.5
D3 (mm)	60
E (mm)	35.0
F (mm)	15.5
G (mm)	7.0
SW1 (mm)	17
SW2 (mm)	24
AM (mm)	32
WH (mm)	37
L (mm)	208
L1 (mm)	158
L2 (mm)	121
L3 (mm)	69

L4 (mm)	25
L5 (mm)	22
L6 (mm)	15
L7 (mm)	18
Cushion stroke front spring	17
Cushion stroke rear spring	16