

Cylinders Series 42 - Series 42

Product code: 42M3N050A0025

Datasheet creation date: 08/03/2025 11:21

Check the most updated document online [click here](#)

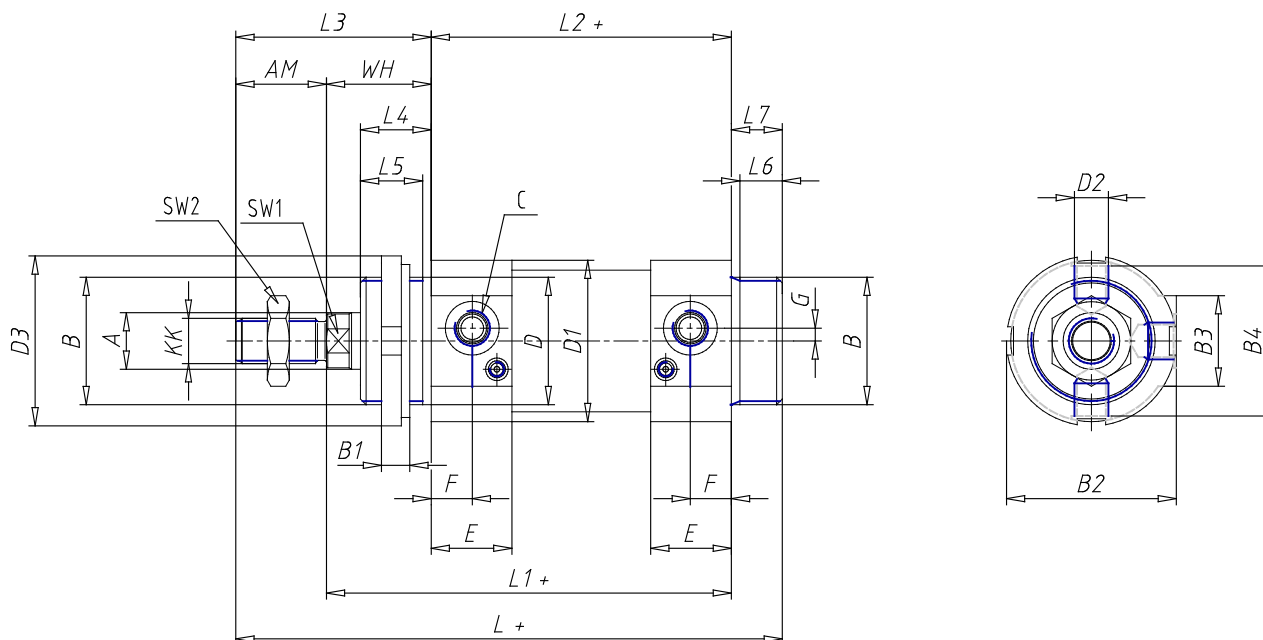


TECHNICAL DATA

Series	42
Diameter (mm)	50
Version	M = standard magnetic
Operation	3 = double-acting (no cushion)
Materials	N = rod stainless steel AISI 420B; tube stainless steel AISI 304; NBR seals
Construction	A = standard (screw with ring V+ lock for nut for rod U)
Stroke type	standard
Stroke (mm)	25

Cylinders Series 42 - Series 42

Product code: 42M3N050A0025



DIMENSIONS

Ø A (mm)	20
KK	M16x1.5
B	M45x1.5
B1 (mm)	10
B2 (mm)	58.5
B3 (mm)	32.0
B4 (mm)	54
C	G1\4
Ø D (mm)	45
D1 (mm)	57
D2	M12x1.5
D3 (mm)	60
E (mm)	28.5
F (mm)	14.5
G (mm)	4.5
SW1 (mm)	17
SW2 (mm)	24
AM (mm)	32
WH (mm)	37
L (mm)	193
L1 (mm)	143
L2 (mm)	106
L3 (mm)	69

L4 (mm)	25
L5 (mm)	22
L6 (mm)	15
L7 (mm)	18
Cushion stroke front spring	15
Cushion stroke rear spring	14