

Cylinders Series 42 - Series 42

Product code: 42M6N032A0075

Datasheet creation date: 08/03/2025 11:12

Check the most updated document online [click here](#)

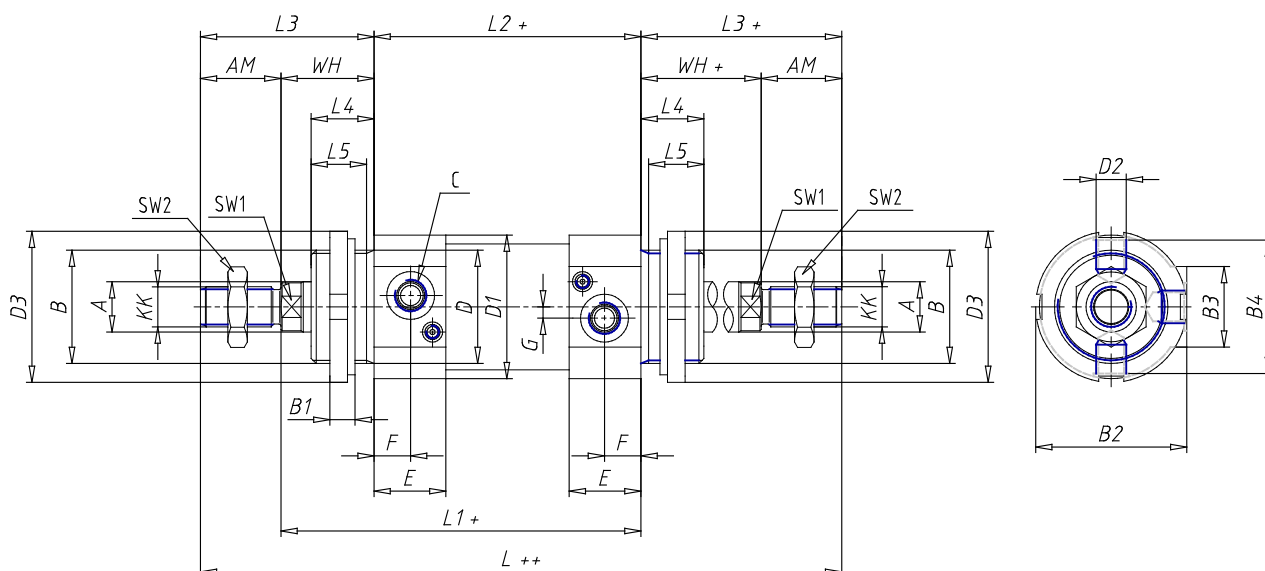


TECHNICAL DATA

Series	42
Diameter (mm)	32
Version	M = standard magnetic
Operation	6 = double-acting (through-rod with front and rear cushions)
Materials	N = rod stainless steel AISI 420B; tube stainless steel AISI 304; NBR seals
Construction	A = standard (screw with ring V+ lock for nut for rod U)
Stroke type	standard
Stroke (mm)	75

Cylinders Series 42 - Series 42

Product code: 42M6N032A0075



DIMENSIONS

Ø A (mm)	12
KK	M10x1.25
B	M30x1.5
B1 (mm)	8
B2 (mm)	41.5
B3 (mm)	28.0
B4 (mm)	36
C	G1\8
Ø D (mm)	30
D1 (mm)	38
D2	M8x1
D3 (mm)	42
E (mm)	23.5
F (mm)	10.5
G (mm)	5.0
SW1 (mm)	10
SW2 (mm)	17
AM (mm)	22
WH (mm)	26
L (mm)	190
L1 (mm)	120
L2 (mm)	94
L3 (mm)	48

L4 (mm)	18
L5 (mm)	15
L6 (mm)	11
L7 (mm)	14
Cushion stroke front spring	17
Cushion stroke rear spring	12