

## Cylinders Series 42 - Series 42

Product code: 42M6N032A0085

Datasheet creation date: 08/03/2025 11:12

Check the most updated document online [click here](#)

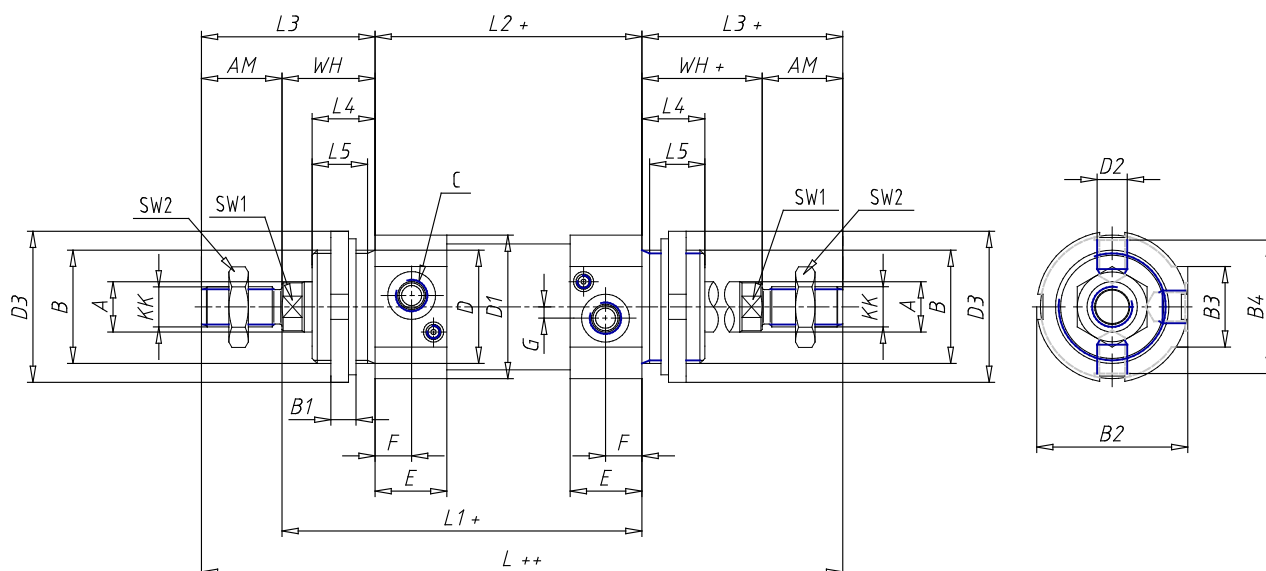


### TECHNICAL DATA

<b>Series</b>	42
<b>Diameter (mm)</b>	32
<b>Version</b>	M = standard magnetic
<b>Operation</b>	6 = double-acting (through-rod with front and rear cushions)
<b>Materials</b>	N = rod stainless steel AISI 420B; tube stainless steel AISI 304; NBR seals
<b>Construction</b>	A = standard (screw with ring V+ lock for nut for rod U)
<b>Stroke type</b>	variable
<b>Stroke (mm)</b>	85

## Cylinders Series 42 - Series 42

Product code: 42M6N032A0085



### DIMENSIONS

Ø A (mm)	12
KK	M10x1.25
B	M30x1.5
B1 (mm)	8
B2 (mm)	41.5
B3 (mm)	28.0
B4 (mm)	36
C	G1\8
Ø D (mm)	30
D1 (mm)	38
D2	M8x1
D3 (mm)	42
E (mm)	23.5
F (mm)	10.5
G (mm)	5.0
SW1 (mm)	10
SW2 (mm)	17
AM (mm)	22
WH (mm)	26
L (mm)	190
L1 (mm)	120
L2 (mm)	94
L3 (mm)	48

L4 (mm)	18
L5 (mm)	15
L6 (mm)	11
L7 (mm)	14
Cushion stroke front spring	17
Cushion stroke rear spring	12