

Cylinders Series 42 - Series 42

Product code: 42M6N040A0250

Datasheet creation date: 08/03/2025 11:18

Check the most updated document online [click here](#)

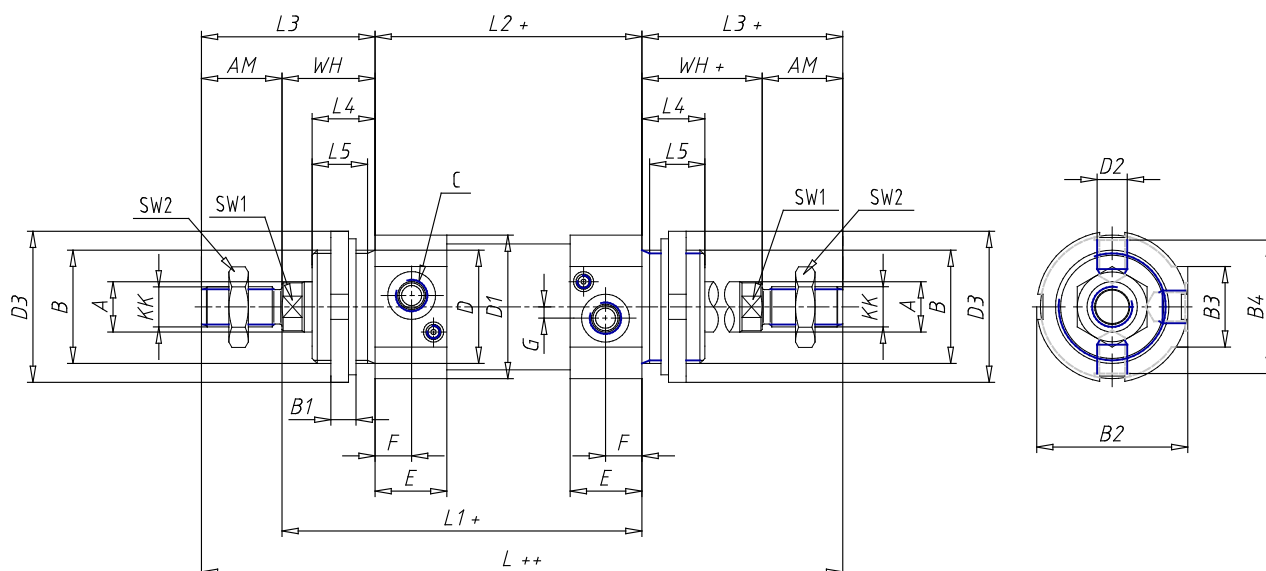


TECHNICAL DATA

Series	42
Diameter (mm)	40
Version	M = standard magnetic
Operation	6 = double-acting (through-rod with front and rear cushions)
Materials	N = rod stainless steel AISI 420B; tube stainless steel AISI 304; NBR seals
Construction	A = standard (screw with ring V+ lock for nut for rod U)
Stroke type	standard
Stroke (mm)	250

Cylinders Series 42 - Series 42

Product code: 42M6N040A0250



DIMENSIONS

Ø A (mm)	16
KK	M12x1.25
B	M38x1.5
B1 (mm)	10
B2 (mm)	50.0
B3 (mm)	30.0
B4 (mm)	43
C	G1\4
Ø D (mm)	38
D1 (mm)	46
D2	M10x1
D3 (mm)	50
E (mm)	29.0
F (mm)	15.0
G (mm)	5.0
SW1 (mm)	13
SW2 (mm)	19
AM (mm)	24
WH (mm)	30
L (mm)	213
L1 (mm)	135
L2 (mm)	105
L3 (mm)	54

L4 (mm)	22
L5 (mm)	19
L6 (mm)	13
L7 (mm)	16
Cushion stroke front spring	20
Cushion stroke rear spring	17