

## 3/2-way solenoid valve, G3/8, bistable - Series 4

Product code: 433-E11-22

Datasheet creation date: 10/03/2025 11:50

Check the most updated document online [click here](#)

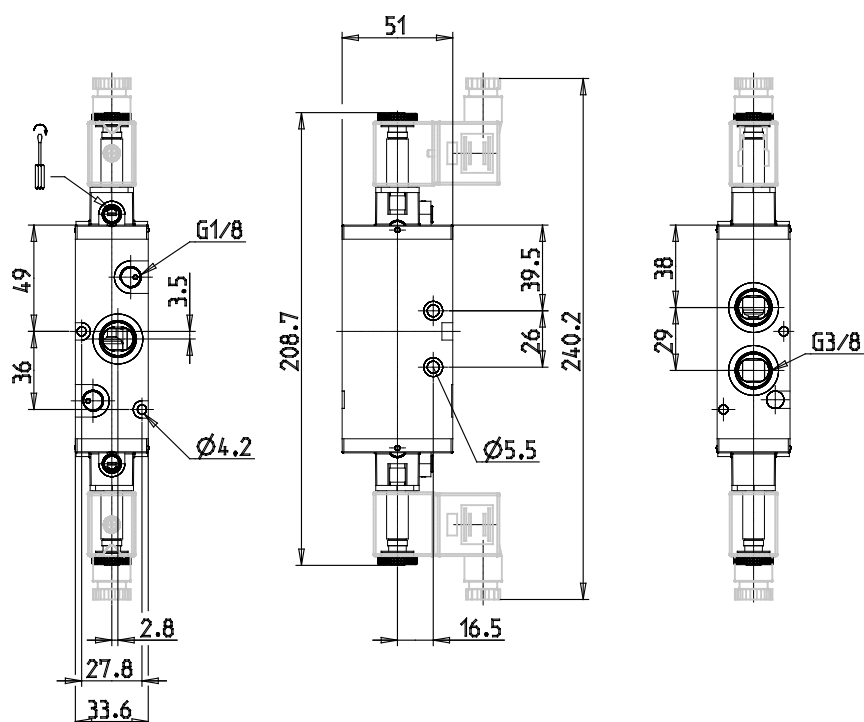


### TECHNICAL DATA

<b>Mod.</b>	433-E11-22
<b>Function</b>	3/2
<b>Flow rate (Nl/min)</b>	1800
<b>Operating pressure (bar)</b>	-0,9-10
<b>Min. pilot pressure (bar)</b>	2

## 3/2-way solenoid valve, G3/8, bistable - Series 4

Product code: 433-E11-22



### DIMENSIONS

<b>Mod.</b>	433-E11-22
<b>Function</b>	3/2
<b>Flow rate (NI/min)</b>	1800
<b>Operating pressure (bar)</b>	-0,9-10
<b>Min. pilot pressure (bar)</b>	2