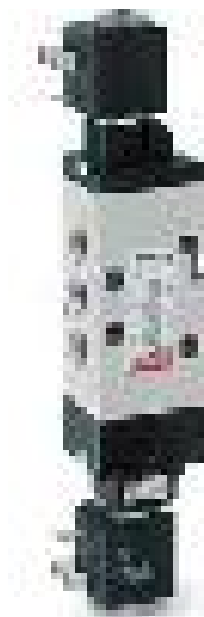


5/3-way solenoid valve, G1/8 - Series 4

Product code: 468-011-22IL

Datasheet creation date: 10/03/2025 12:01

Check the most updated document online [click here](#)

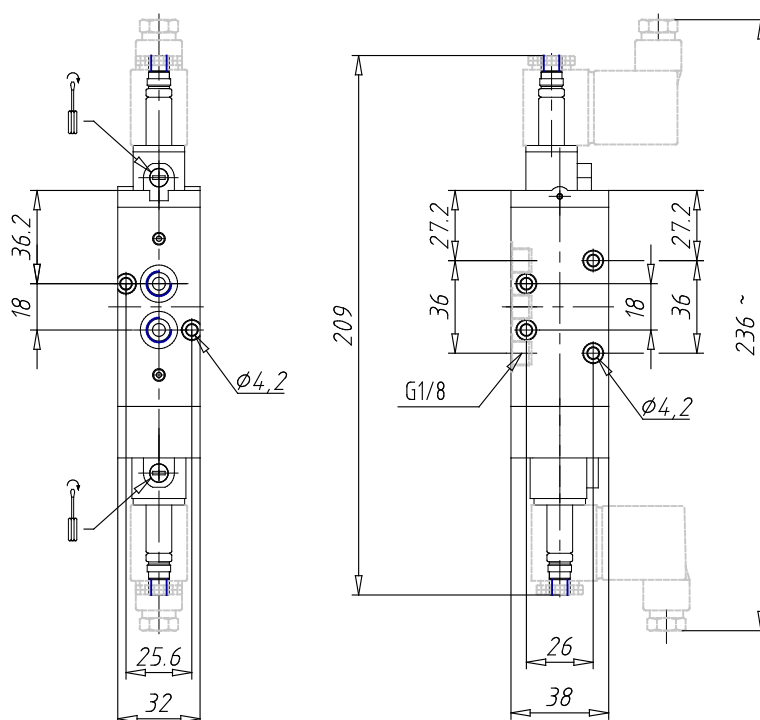


TECHNICAL DATA

Mod.	468-011-22
Function	5/3 CC
Flow rate (NI/min)	600
Operating pressure	2.5 ÷ 10
Type of manual override	IL = bistable, lever type (available on demand)
Dimensions of the solenoid	No solenoid
Solenoid voltage	

5/3-way solenoid valve, G1/8 - Series 4

Product code: 468-011-22IL



DIMENSIONS

Mod.	468-011-22
Function	5/3 CC
Flow rate (Nl/min)	600
Operating pressure	2.5 ÷ 10
Type of manual override	IL = bistable, lever type (available on demand)
Dimensions of the solenoid	No solenoid
Solenoid voltage	