

Rodless cylinders - Series 50

Product code: 50M2U25A1400

Datasheet creation date: 08/03/2025 11:27

Check the most updated document online [click here](#)

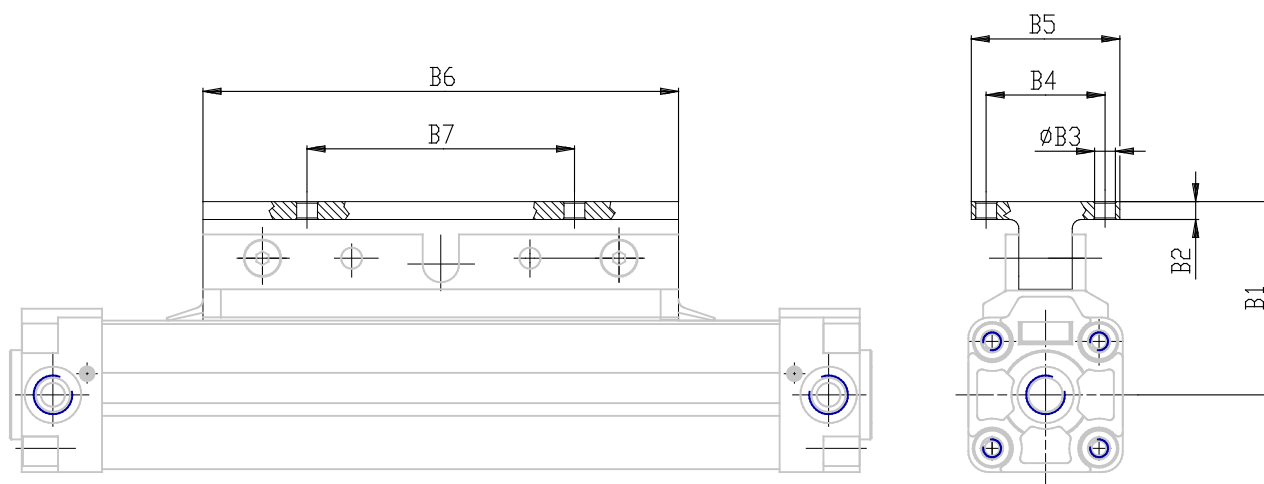


TECHNICAL DATA

| | |
|--------------------------|--|
| Series | 50 |
| Version | M = magnetic standard |
| Operation | 2 = double-acting cushioned |
| Materials | U = anodized AL profile tube, NBR and Polyurethane seals, flange type carriage |
| Diameter (mm) | 25 |
| Construction (mm) | A = standard |
| Stroke (mm) | 1400 |

Rodless cylinders - Series 50

Product code: 50M2U25A1400



DIMENSIONS

| | |
|---------|------|
| A (mm) | 8 |
| B (mm) | 50 |
| C (mm) | 80 |
| D (mm) | 100 |
| E (mm) | 120 |
| F | M5 |
| F1 (mm) | 10 |
| G (mm) | 13 |
| H (mm) | 2.5 |
| I (mm) | G1/8 |
| L (mm) | 9.5 |
| L1 (mm) | 150 |
| M (mm) | 22 |
| N (mm) | 25 |
| P (mm) | M5 |
| P1 (mm) | 5 |
| Q (mm) | 13.5 |
| R (mm) | 63.0 |
| S (mm) | 40.0 |
| S1 (mm) | 40 |
| T (mm) | 20.0 |
| U (mm) | 15 |
| V (mm) | 23 |

| | |
|----------|------|
| Z (mm) | 33 |
| Y (mm) | 38.0 |
| W (mm) | 40 |
| AA (mm) | 43 |
| BB (mm) | 46 |
| TG (mm) | 27 |
| SW2 (mm) | 6 |
| B1 (mm) | 51 |
| B2 (mm) | 5 |
| B3 (mm) | 5.5 |
| B4 (mm) | 35 |
| B5 (mm) | 50 |
| B6 (mm) | 120 |
| B7 (mm) | 70 |