

Rodless cylinders - Series 52

Product code: 52M8P63A1000

Datasheet creation date: 08/03/2025 13:31

Check the most updated document online [click here](#)

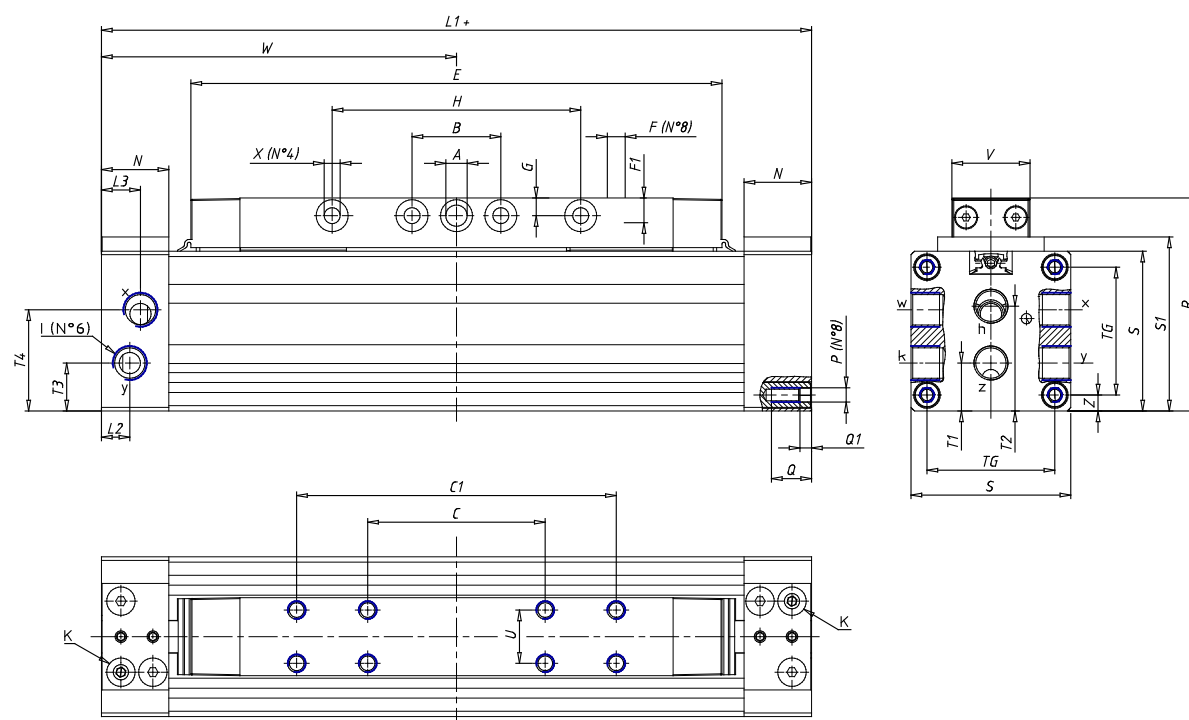


TECHNICAL DATA

| | |
|-----------------------------|---|
| Series | 52M8P63A |
| Diameter (mm) | 63 |
| Version | M= standard |
| Operation | 8 = double-acting, cushioned, with air supply from one side only |
| Materials | P = anodized AL profile tube, NBR and Polyurethane seals, standard carriage |
| Construction | A = standard |
| Stroke Cylinder (mm) | 1000 |

Rodless cylinders - Series 52

Product code: 52M8P63A1000



DIMENSIONS

| | |
|----------|-------|
| W (mm) | 200.0 |
| E (mm) | 300.0 |
| L1 (mm) | 400 |
| I | G3/8 |
| B (mm) | 50 |
| G (mm) | 9.5 |
| N (mm) | 30 |
| L (mm) | 17.0 |
| Ø A (mm) | 10.0 |
| Ø X (mm) | 8.5 |
| S1 (mm) | 110 |
| T (mm) | 68.5 |
| Z (mm) | 14.0 |
| C1 (mm) | 240 |
| C (mm) | 80 |
| U (mm) | 34 |
| F | M8 |
| F1 (mm) | 16.0 |
| H (mm) | 180.0 |
| V (mm) | 46.0 |
| S (mm) | 106 |
| R (mm) | 131 |
| P | M8 |

| | |
|---------|-------|
| TG (mm) | 78 |
| Q (mm) | 17 |
| Q1 (mm) | 5 |
| T1 (mm) | 34.0 |
| T2 (mm) | 68.5 |
| T3 (mm) | 34.0 |
| T4 (mm) | 68.5 |
| L2 (mm) | 17.0 |
| L3 (mm) | 17.0 |
| D (mm) | 10.5 |
| M (mm) | 4.5 |
| J | 0 |
| JP (mm) | 0.0 |
| J1 (mm) | 0 |
| R1 (mm) | 150.0 |
| X1 (mm) | 6.5 |
| Y (mm) | 4.5 |
| Y1 (mm) | 6.5 |
| Y2 (mm) | 0 |
| Y3 (mm) | 6 |
| R2 (mm) | 0.0 |