

## Cylinders - aluminium profile ISO 15552 (ex DIN/ISO 6431 / VDMA 24562) - Series 61

Product code: 61M2P100A0150N

Datasheet creation date: 08/03/2025 14:10

Check the most updated document online [click here](#)

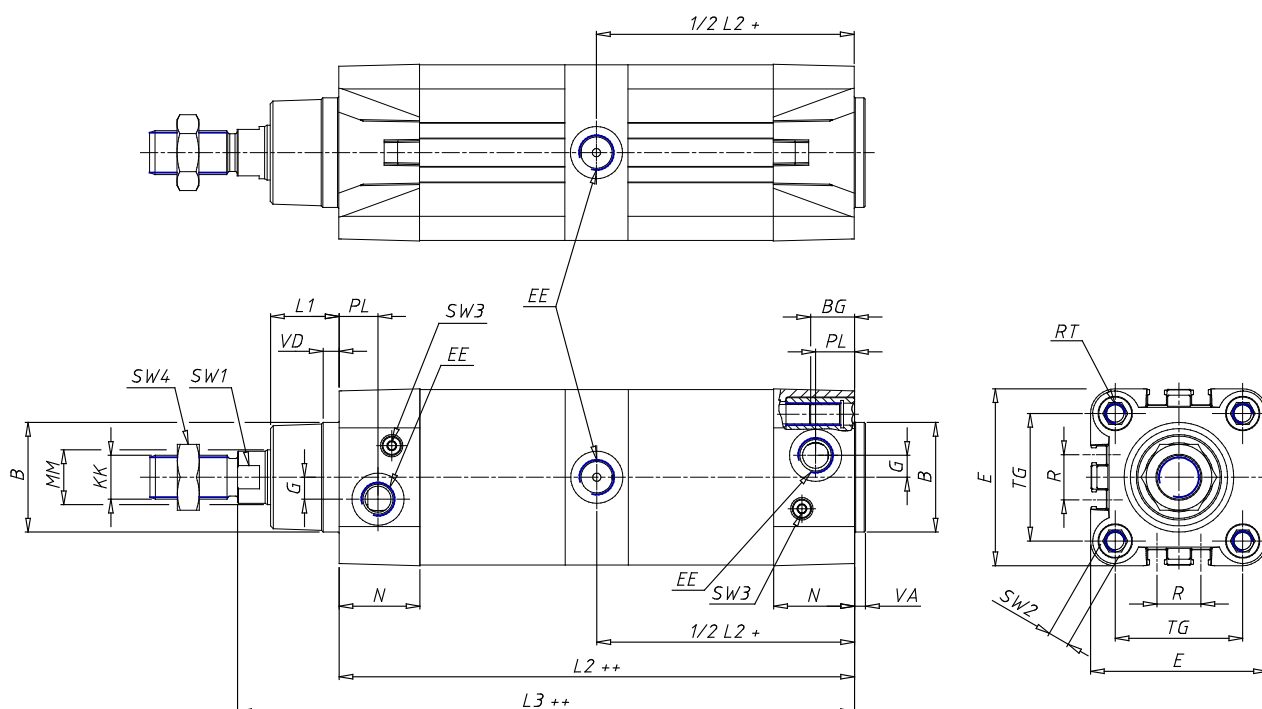


### TECHNICAL DATA

<b>SERIE (Series / mm)</b>	61
<b>PHY (Diameter / mm)</b>	100
<b>VERSION (Version)</b>	M = magnetic standard
<b>FUNZ (Operation)</b>	2=double acting (front and rear cushions)
<b>MAT (Materials)</b>	P = standard: AL end-blocks and piston, rolled stainless steel AISI 420B rod, anodized AL profile tube, zinc-plated steel tie-rods and tie-rod nuts, PU seals
<b>TYP (Construction)</b>	A = standard with lock nut for rod
<b>HUBT (Stroke type)</b>	variable
<b>HUB (Stroke / mm)</b>	150
<b>ES (execution)</b>	N = tandem
<b>LSTELO (extended piston / mm)</b>	0

## Cylinders - aluminium profile ISO 15552 (ex DIN/ISO 6431 / VDMA 24562) - Series 61

Product code: 61M2P100A0150N



### DIMENSIONS

<b>MM (MM / mm)</b>	25
<b>KK (KK)</b>	M20x1,5
<b>B (B d11 / mm)</b>	55
<b>PL (PL / mm)</b>	23
<b>L1 (L1 / mm)</b>	35
<b>AM (AM / mm)</b>	40
<b>VA (VA / mm)</b>	4
<b>EE (EE)</b>	G1/2
<b>WH (WH / mm)</b>	51
<b>L2 (L2 / mm)</b>	231.0
<b>ZM (ZM / mm)</b>	-
<b>ZJ (ZJ / mm)</b>	189
<b>VD (VD / mm)</b>	7
<b>N (N / mm)</b>	38.5
<b>BG (BG / mm)</b>	19.5
<b>RT (RT)</b>	M10
<b>G (G / mm)</b>	8.0
<b>TG (TG / mm)</b>	89.0
<b>R (R / mm)</b>	40.0
<b>E (E / mm)</b>	110.0
<b>SW1 (SW1 / mm)</b>	22
<b>SW2 (SW2 / mm)</b>	10
<b>SW3 (SW3 / mm)</b>	5

<b>SW4 (SW4 / mm)</b>	30
<b>HUBA (Cushion stroke front spring)</b>	21
<b>HUBP (Cushion stroke rear spring)</b>	19
<b>L3 (L3 / mm)</b>	282.0
<b>L4 (L4 / mm)</b>	18
<b>L5 (L5 / mm)</b>	20
<b>L6 (L6 / mm)</b>	39.0
<b>L7 (L7 / mm)</b>	69.0
<b>L8 (L8 / mm)</b>	105
<b>L9 (L9 / mm)</b>	138.0
<b>L10 ( / mm)</b>	269.0
<b>D (ø D / mm)</b>	25
<b>D1 (ø D1 d11 / mm)</b>	55.0
<b>D2 (ø D2 / mm)</b>	100
<b>D3 (ø D3 f6 / mm)</b>	58
<b>A (± 0.15 / mm)</b>	89.0
<b>GX (GX)</b>	G1/8
<b>H (H / mm)</b>	58.0
<b>H1 (H1 / mm)</b>	110.5
<b>M (M)</b>	M10
<b>Z (Z)</b>	M10 x 35