

## Electromechanical cylinders - Series 6E

Product code: 6E040BS0400P16AP

Datasheet creation date: 07/03/2025 17:03

Check the most updated document online [click here](#)

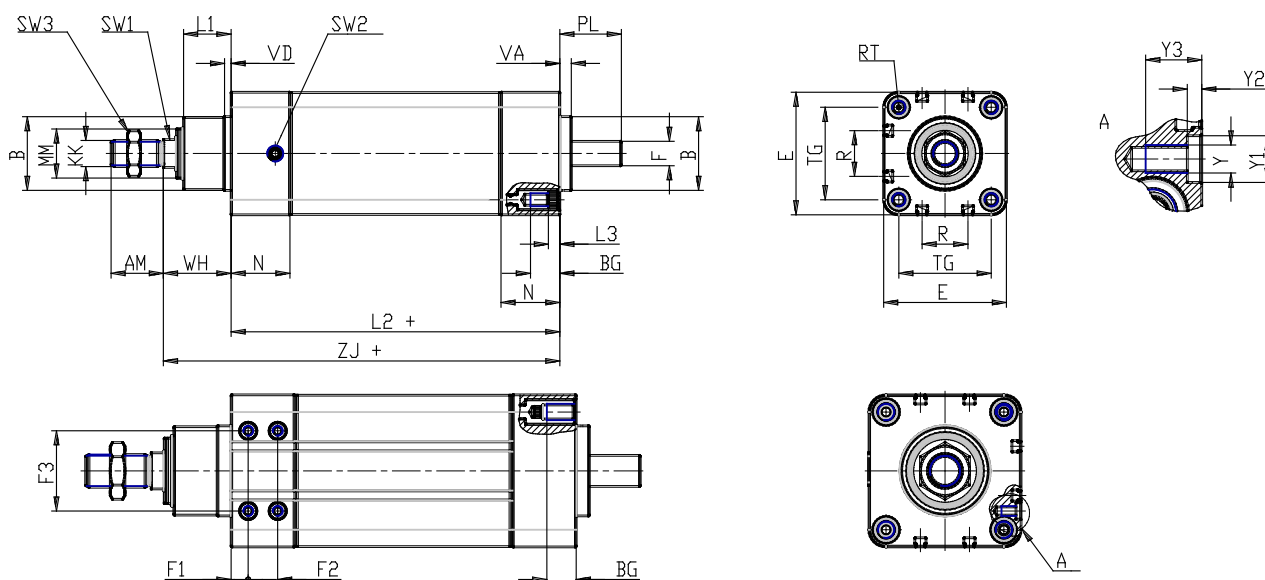


### TECHNICAL DATA

<b>Series</b>	6E
<b>Size (mm)</b>	040
<b>Transmission</b>	BS = ball screw
<b>Stroke (mm)</b>	400
<b>Screw pitch (mm)</b>	P16= 16mm
<b>Construction</b>	A= standard with rod nut
<b>Extended piston rod</b>	0
<b>Version</b>	P = IP65
<b>Motor connection</b>	cylinder only
<b>Motor</b>	
<b>Brake</b>	
<b>Encoder</b>	

## Electromechanical cylinders - Series 6E

Product code: 6E040BS0400P16AP



### DIMENSIONS

AM (mm)	24
B (mm)	35
BG (mm)	16
E (mm)	55.4
F (mm)	10
F1 (mm)	0.0
F2 (mm)	0
F3 (mm)	0
KK (mm)	M12 x 1,25
(mm)	12
L1 (mm)	22
L2 (mm)	142
L3 (mm)	5.5
MM (mm)	22
N (mm)	27
R (mm)	13.5
RT (mm)	M6
PL (mm)	24
SW1 (mm)	13
SW2	G 1/8
SW3 (mm)	19
TG (mm)	38.0
VA (mm)	6

VD (mm)	4
Y	0
Y1 (mm)	0
Y2 (mm)	0
Y3 (mm)	0
WH (mm)	33
ZJ (mm)	175.0