

Electromechanical cylinders - Series 6E

Product code: 6E040BS0550P10AP

Datasheet creation date: 07/03/2025 17:03

Check the most updated document online [click here](#)

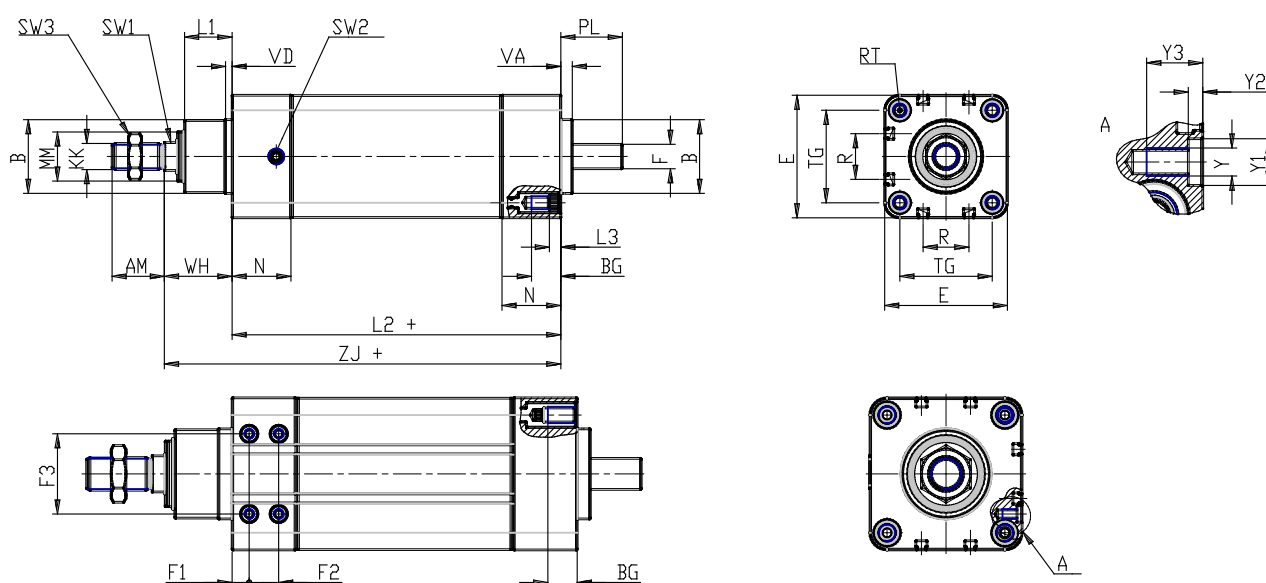


TECHNICAL DATA

Series	6E
Size (mm)	040
Transmission	BS = ball screw
Stroke (mm)	550
Screw pitch (mm)	P10= 10mm
Construction	A= standard with rod nut
Extended piston rod	0
Version	P = IP65
Motor connection	cylinder only
Motor	
Brake	
Encoder	

Electromechanical cylinders - Series 6E

Product code: 6E040BS0550P10AP



DIMENSIONS

AM (mm)	24
B (mm)	35
BG (mm)	16
E (mm)	55.4
F (mm)	10
F1 (mm)	0.0
F2 (mm)	0
F3 (mm)	0
KK (mm)	M12 x 1,25
(mm)	12
L1 (mm)	22
L2 (mm)	142
L3 (mm)	5.5
MM (mm)	22
N (mm)	27
R (mm)	13.5
RT (mm)	M6
PL (mm)	24
SW1 (mm)	13
SW2	G 1/8
SW3 (mm)	19
TG (mm)	38.0
VA (mm)	6

VD (mm)	4
Y	0
Y1 (mm)	0
Y2 (mm)	0
Y3 (mm)	0
WH (mm)	33
ZJ (mm)	175.0