

Electromechanical cylinders - Series 6E

Product code: 6E050BS0200P20AP

Datasheet creation date: 07/03/2025 17:04

Check the most updated document online [click here](#)

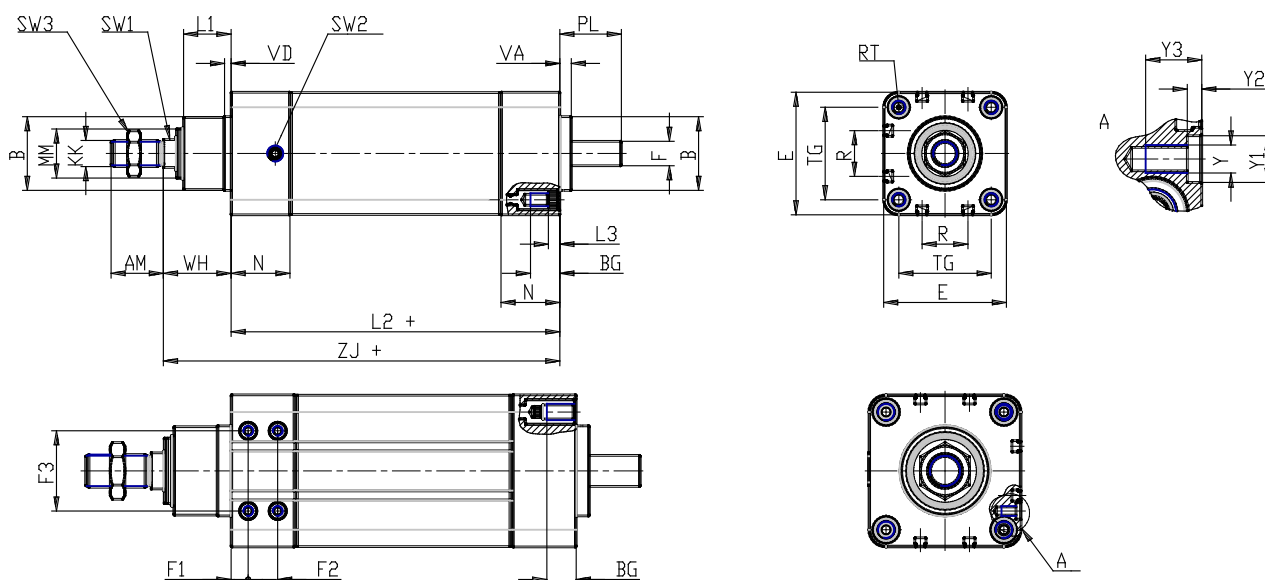


TECHNICAL DATA

| | |
|----------------------------|--------------------------|
| Series | 6E |
| Size (mm) | 050 |
| Transmission | BS = ball screw |
| Stroke (mm) | 200 |
| Screw pitch (mm) | P20= 20mm |
| Construction | A= standard with rod nut |
| Extended piston rod | 0 |
| Version | P = IP65 |
| Motor connection | cylinder only |
| Motor | |
| Brake | |
| Encoder | |

Electromechanical cylinders - Series 6E

Product code: 6E050BS0200P20AP



DIMENSIONS

| | |
|----------|-----------|
| AM (mm) | 32 |
| B (mm) | 40 |
| BG (mm) | 16 |
| E (mm) | 64.9 |
| F (mm) | 12 |
| F1 (mm) | 0.0 |
| F2 (mm) | 0 |
| F3 (mm) | 0 |
| KK (mm) | M16 x 1,5 |
| (mm) | 16 |
| L1 (mm) | 26 |
| L2 (mm) | 173 |
| L3 (mm) | 5.5 |
| MM (mm) | 25 |
| N (mm) | 36 |
| R (mm) | 16.0 |
| RT (mm) | M8 |
| PL (mm) | 30 |
| SW1 (mm) | 17 |
| SW2 | G 1/8 |
| SW3 (mm) | 24 |
| TG (mm) | 46.5 |
| VA (mm) | 7 |

| | |
|---------|-------|
| VD (mm) | 4 |
| Y | 0 |
| Y1 (mm) | 0 |
| Y2 (mm) | 0 |
| Y3 (mm) | 0 |
| WH (mm) | 38 |
| ZJ (mm) | 211.0 |