

Electromechanical cylinders - Series 6E

Product code: 6E050BS0300P20AP

Datasheet creation date: 07/03/2025 17:05

Check the most updated document online [click here](#)

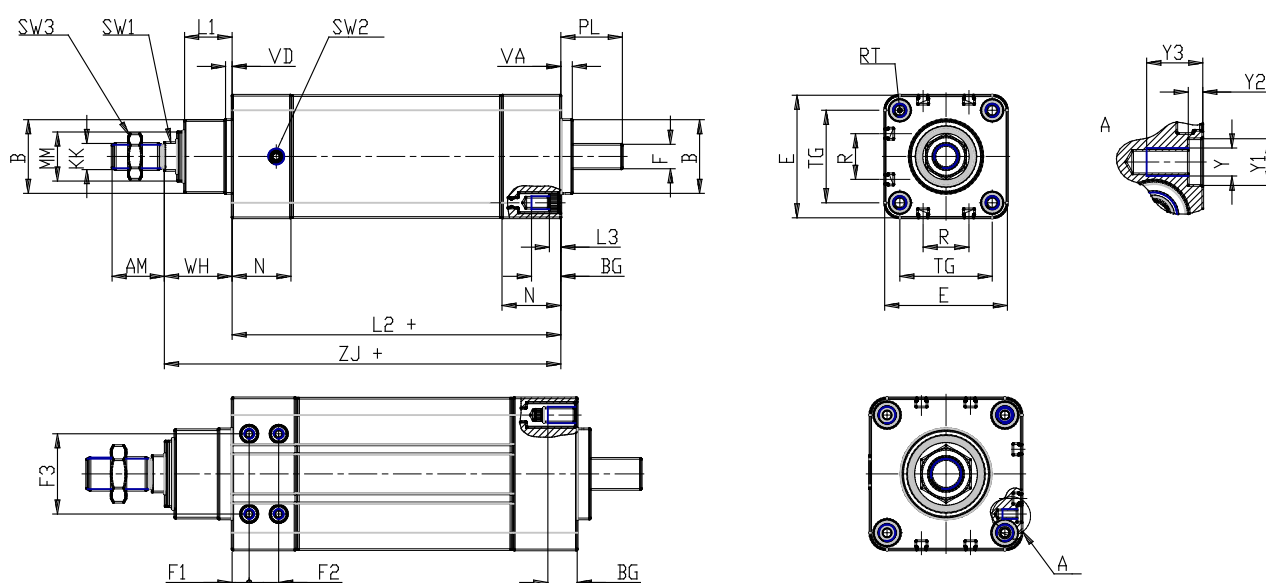


TECHNICAL DATA

Series	6E
Size (mm)	050
Transmission	BS = ball screw
Stroke (mm)	300
Screw pitch (mm)	P20= 20mm
Construction	A= standard with rod nut
Extended piston rod	0
Version	P = IP65
Motor connection	cylinder only
Motor	
Brake	
Encoder	

Electromechanical cylinders - Series 6E

Product code: 6E050BS0300P20AP



DIMENSIONS

AM (mm)	32
B (mm)	40
BG (mm)	16
E (mm)	64.9
F (mm)	12
F1 (mm)	0.0
F2 (mm)	0
F3 (mm)	0
KK (mm)	M16 x 1,5
(mm)	16
L1 (mm)	26
L2 (mm)	173
L3 (mm)	5.5
MM (mm)	25
N (mm)	36
R (mm)	16.0
RT (mm)	M8
PL (mm)	30
SW1 (mm)	17
SW2	G 1/8
SW3 (mm)	24
TG (mm)	46.5
VA (mm)	7

VD (mm)	4
Y	0
Y1 (mm)	0
Y2 (mm)	0
Y3 (mm)	0
WH (mm)	38
ZJ (mm)	211.0