

Electromechanical cylinders - Series 6E

Product code: 6E063BS0500P05AP

Datasheet creation date: 07/03/2025 17:07

Check the most updated document online [click here](#)

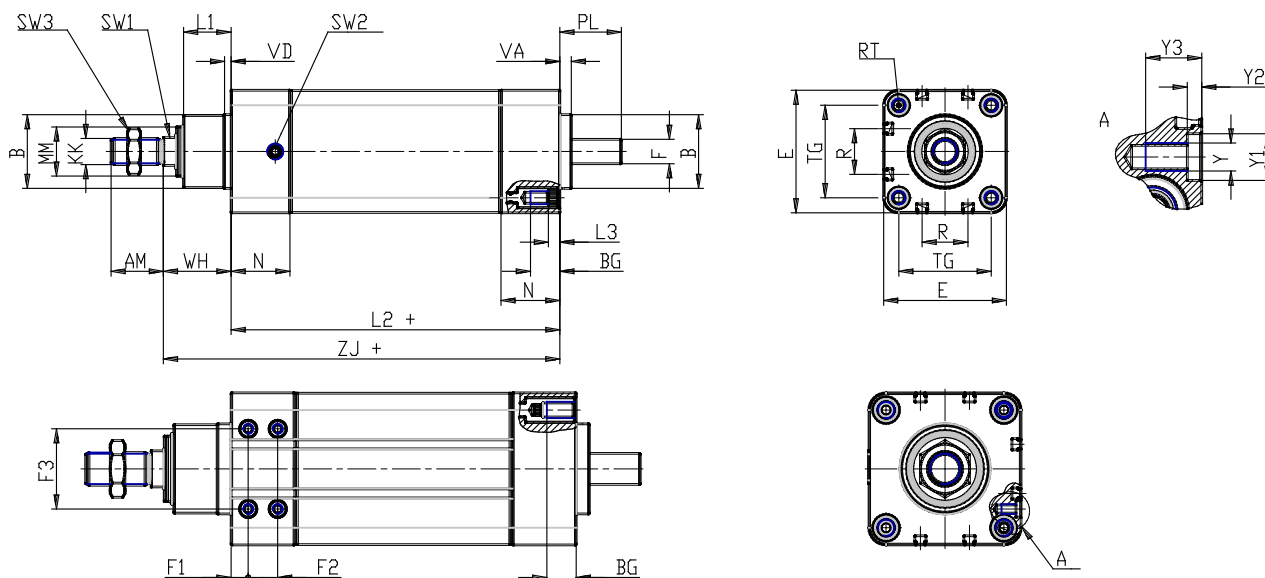


TECHNICAL DATA

Series	6E
Size (mm)	063
Transmission	BS = ball screw
Stroke (mm)	500
Screw pitch (mm)	P05= 5mm
Construction	A= standard with rod nut
Extended piston rod	0
Version	P = IP65
Motor connection	cylinder only
Motor	
Brake	
Encoder	

Electromechanical cylinders - Series 6E

Product code: 6E063BS0500P05AP



DIMENSIONS

AM (mm)	32
B (mm)	45
BG (mm)	16
E (mm)	75.0
F (mm)	15
F1 (mm)	0.0
F2 (mm)	0
F3 (mm)	0
KK (mm)	M16 x 1,5
(mm)	16
L1 (mm)	29
L2 (mm)	201
L3 (mm)	5.5
MM (mm)	30
N (mm)	36
R (mm)	28.0
RT (mm)	M8
PL (mm)	38
SW1 (mm)	17
SW2	G 1/8
SW3 (mm)	24
TG (mm)	56.5
VA (mm)	7

VD (mm)	4
Y	0
Y1 (mm)	0
Y2 (mm)	0
Y3 (mm)	0
WH (mm)	42
ZJ (mm)	242.5