

## Electromechanical cylinders - Series 6E

Product code: 6E063BS1200P10AP

Datasheet creation date: 07/03/2025 17:07

Check the most updated document online [click here](#)

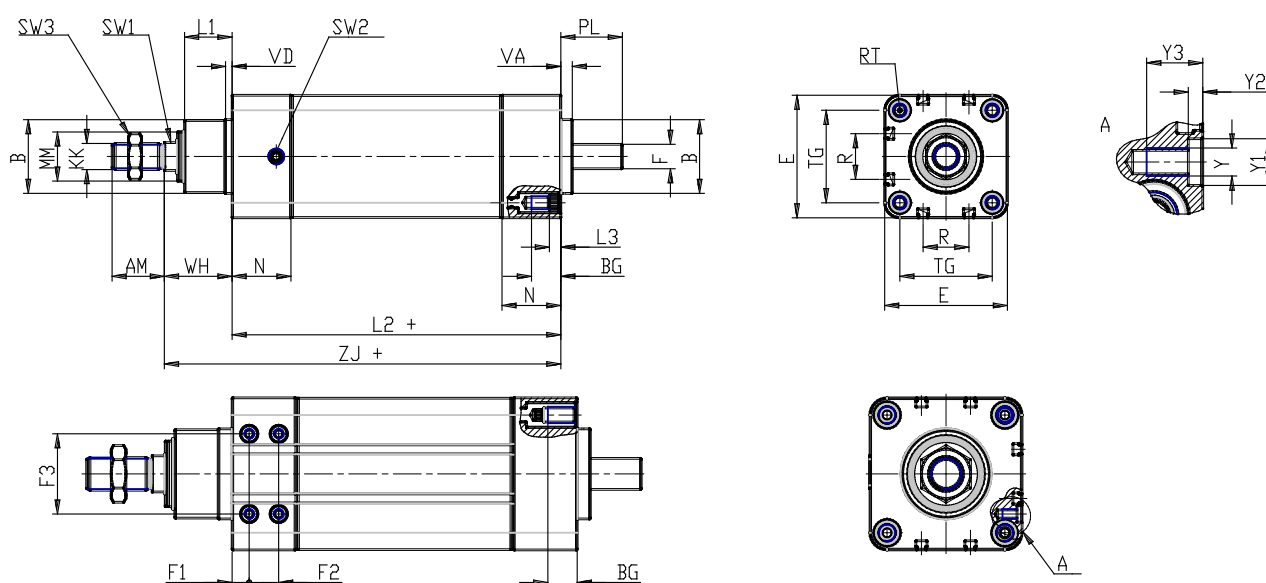


### TECHNICAL DATA

<b>Series</b>	6E
<b>Size (mm)</b>	063
<b>Transmission</b>	BS = ball screw
<b>Stroke (mm)</b>	1200
<b>Screw pitch (mm)</b>	P10= 10mm
<b>Construction</b>	A= standard with rod nut
<b>Extended piston rod</b>	0
<b>Version</b>	P = IP65
<b>Motor connection</b>	cylinder only
<b>Motor</b>	
<b>Brake</b>	
<b>Encoder</b>	

## Electromechanical cylinders - Series 6E

Product code: 6E063BS1200P10AP



### DIMENSIONS

AM (mm)	32
B (mm)	45
BG (mm)	16
E (mm)	75.0
F (mm)	15
F1 (mm)	0.0
F2 (mm)	0
F3 (mm)	0
KK (mm)	M16 x 1,5
(mm)	16
L1 (mm)	29
L2 (mm)	201
L3 (mm)	5.5
MM (mm)	30
N (mm)	36
R (mm)	28.0
RT (mm)	M8
PL (mm)	38
SW1 (mm)	17
SW2	G 1/8
SW3 (mm)	24
TG (mm)	56.5
VA (mm)	7

VD (mm)	4
Y	0
Y1 (mm)	0
Y2 (mm)	0
Y3 (mm)	0
WH (mm)	42
ZJ (mm)	242.5