

## Electromechanical cylinders - Series 6E

Product code: 6E080BS0125P32AP

Datasheet creation date: 07/03/2025 17:08

Check the most updated document online [click here](#)

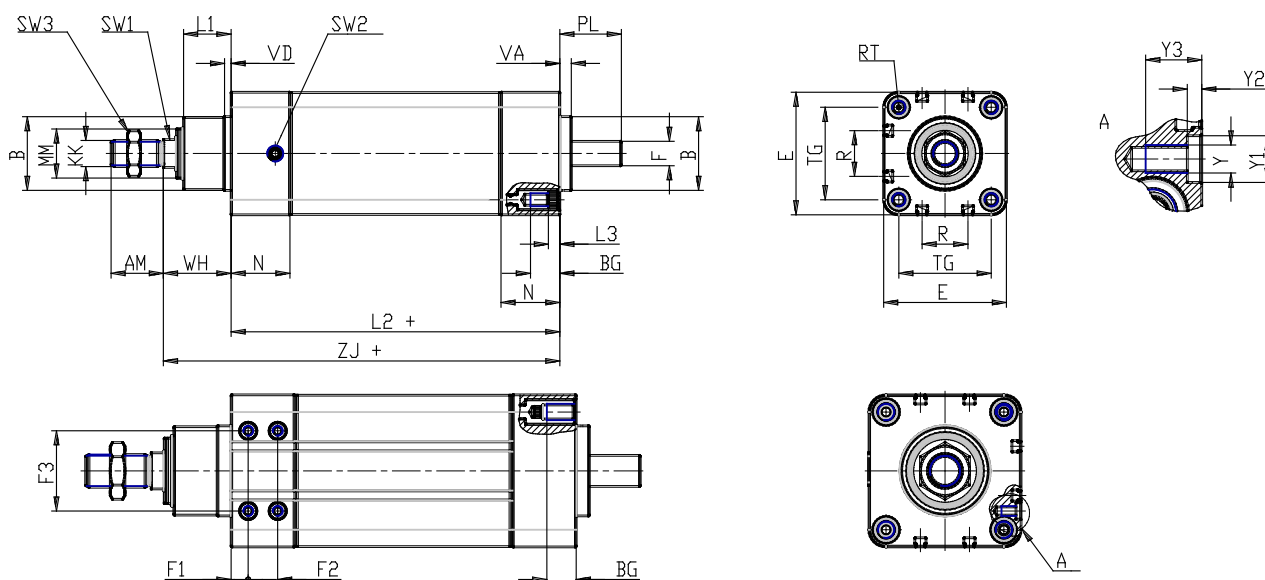


### TECHNICAL DATA

<b>Series</b>	6E
<b>Size (mm)</b>	080
<b>Transmission</b>	BS = ball screw
<b>Stroke (mm)</b>	125
<b>Screw pitch (mm)</b>	P32=32mm
<b>Construction</b>	A= standard with rod nut
<b>Extended piston rod</b>	0
<b>Version</b>	P = IP65
<b>Motor connection</b>	cylinder only
<b>Motor</b>	
<b>Brake</b>	
<b>Encoder</b>	

## Electromechanical cylinders - Series 6E

Product code: 6E080BS0125P32AP



### DIMENSIONS

AM (mm)	40
B (mm)	55
BG (mm)	18
E (mm)	93.0
F (mm)	19
F1 (mm)	10.5
F2 (mm)	18
F3 (mm)	49
KK (mm)	M20 x 1,5
(mm)	20
L1 (mm)	35
L2 (mm)	211
L3 (mm)	0.0
MM (mm)	40
N (mm)	39
R (mm)	30.0
RT (mm)	M10
PL (mm)	39
SW1 (mm)	22
SW2	G 1/4
SW3 (mm)	30
TG (mm)	72.0
VA (mm)	8

VD (mm)	8
Y	M6
Y1 (mm)	10
Y2 (mm)	3
Y3 (mm)	12
WH (mm)	49
ZJ (mm)	260.0