

## Electromechanical cylinders - Series 6E

Product code: 6E100BS1000P10AP

Datasheet creation date: 07/03/2025 17:01

Check the most updated document online [click here](#)

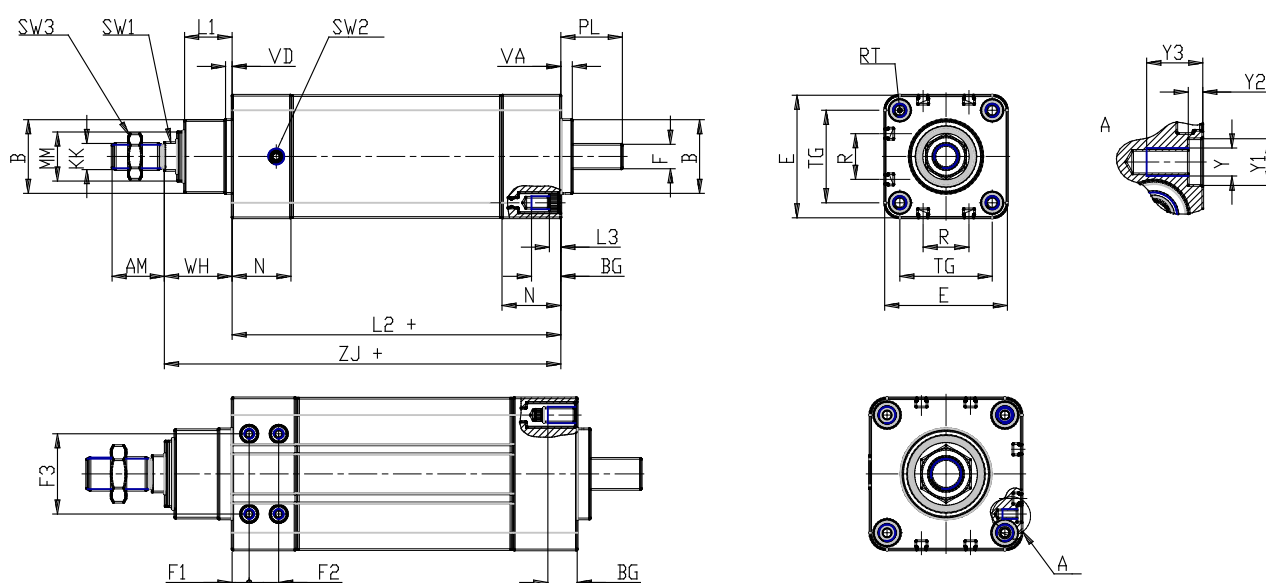


### TECHNICAL DATA

|                            |                          |
|----------------------------|--------------------------|
| <b>Series</b>              | 6E                       |
| <b>Size (mm)</b>           | 100                      |
| <b>Transmission</b>        | BS = ball screw          |
| <b>Stroke (mm)</b>         | 1000                     |
| <b>Screw pitch (mm)</b>    | P10= 10mm                |
| <b>Construction</b>        | A= standard with rod nut |
| <b>Extended piston rod</b> | 0                        |
| <b>Version</b>             | P = IP65                 |
| <b>Motor connection</b>    | cylinder only            |
| <b>Motor</b>               |                          |
| <b>Brake</b>               |                          |
| <b>Encoder</b>             |                          |

## Electromechanical cylinders - Series 6E

Product code: 6E100BS1000P10AP



### DIMENSIONS

|          |           |
|----------|-----------|
| AM (mm)  | 40        |
| B (mm)   | 65        |
| BG (mm)  | 18        |
| E (mm)   | 115.0     |
| F (mm)   | 24        |
| F1 (mm)  | 13.0      |
| F2 (mm)  | 18        |
| F3 (mm)  | 62        |
| KK (mm)  | M20 x 1,5 |
| (mm)     | 20        |
| L1 (mm)  | 38        |
| L2 (mm)  | 232       |
| L3 (mm)  | 0.0       |
| MM (mm)  | 50        |
| N (mm)   | 44        |
| R (mm)   | 40.0      |
| RT (mm)  | M10       |
| PL (mm)  | 42        |
| SW1 (mm) | 22        |
| SW2      | G 1/4     |
| SW3 (mm) | 30        |
| TG (mm)  | 89.0      |
| VA (mm)  | 8         |

|         |       |
|---------|-------|
| VD (mm) | 8     |
| Y       | M6    |
| Y1 (mm) | 10    |
| Y2 (mm) | 3     |
| Y3 (mm) | 16    |
| WH (mm) | 51    |
| ZJ (mm) | 283.0 |