

Electromechanical cylinders - Series 6E

Product code: 6E100BS1500P20AP

Datasheet creation date: 07/03/2025 17:02

Check the most updated document online [click here](#)

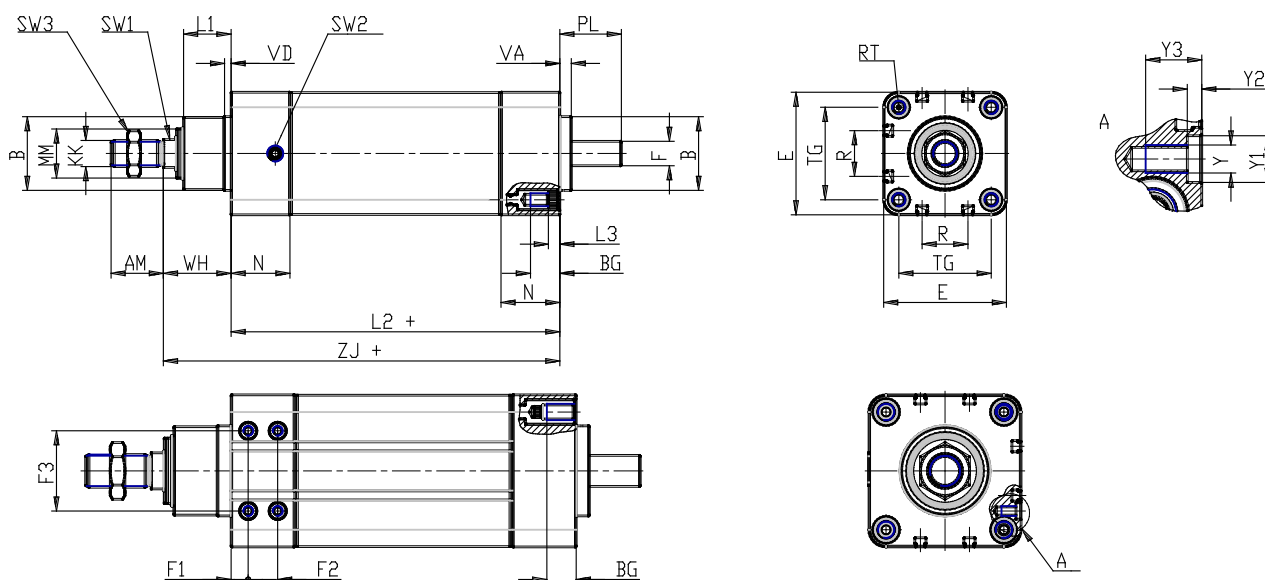


TECHNICAL DATA

Series	6E
Size (mm)	100
Transmission	BS = ball screw
Stroke (mm)	1500
Screw pitch (mm)	P20= 20mm
Construction	A= standard with rod nut
Extended piston rod	0
Version	P = IP65
Motor connection	cylinder only
Motor	
Brake	
Encoder	

Electromechanical cylinders - Series 6E

Product code: 6E100BS1500P20AP



DIMENSIONS

AM (mm)	40
B (mm)	65
BG (mm)	18
E (mm)	115.0
F (mm)	24
F1 (mm)	13.0
F2 (mm)	18
F3 (mm)	62
KK (mm)	M20 x 1,5
(mm)	20
L1 (mm)	38
L2 (mm)	232
L3 (mm)	0.0
MM (mm)	50
N (mm)	44
R (mm)	40.0
RT (mm)	M10
PL (mm)	42
SW1 (mm)	22
SW2	G 1/4
SW3 (mm)	30
TG (mm)	89.0
VA (mm)	8

VD (mm)	8
Y	M6
Y1 (mm)	10
Y2 (mm)	3
Y3 (mm)	16
WH (mm)	51
ZJ (mm)	283.0