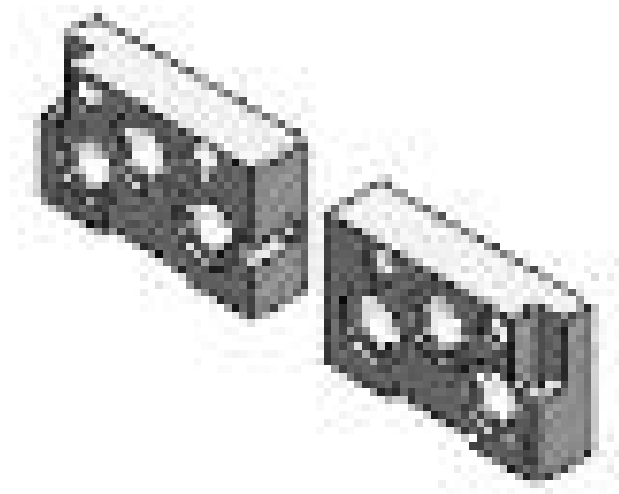


End blocks for manifold bases with common inlet and exhaust ports and with outlet ports

Product code: 702C-HN2

Datasheet creation date: 07/03/2025 16:18

Check the most updated document online [click here](#)

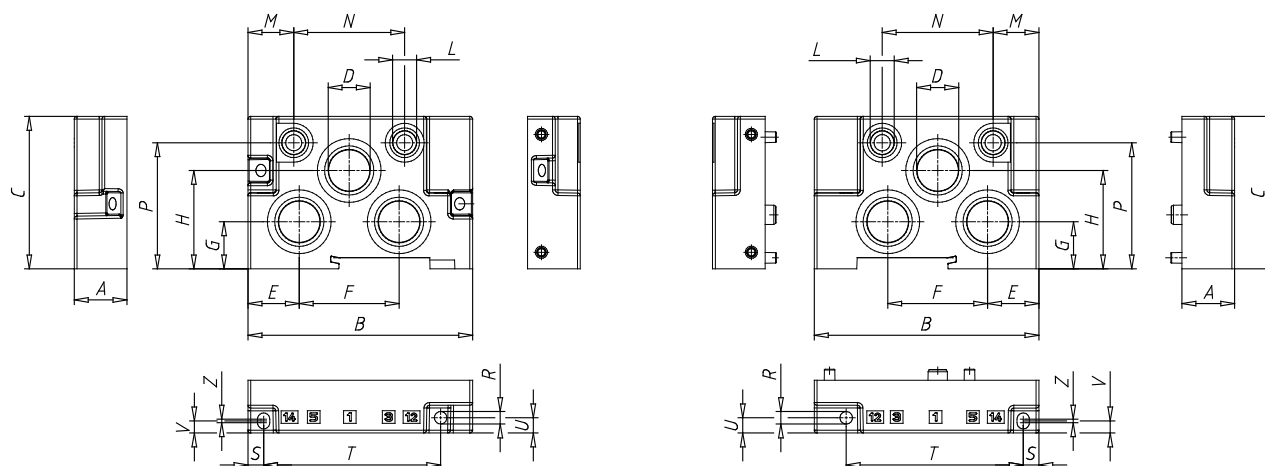


■ TECHNICAL DATA

Mod.	702C-HN2
Size (ISO 15407-1) (mm)	18
N° positions	1

End blocks for manifold bases with common inlet and exhaust ports and with outlet ports

Product code: 702C-HN2



DIMENSIONS

A (mm)	19
B (mm)	81
C (mm)	55
D	G3/8
E (mm)	18.5
F (mm)	36
G (mm)	17.0
H (mm)	35.5
L	G1/8
M (mm)	16.5
N (mm)	40
P (mm)	45.5
R (mm)	4.5
heavy (mm)	4.65
T (mm)	63.85
U (mm)	5.5
V (mm)	4.35
Z (mm)	1.3