

## Stainless steel Cylinders (DIN/ISO 6431 - Series 90)

Product code: 90M2A040A0050

Datasheet creation date: 07/03/2025 17:15

Check the most updated document online [click here](#)

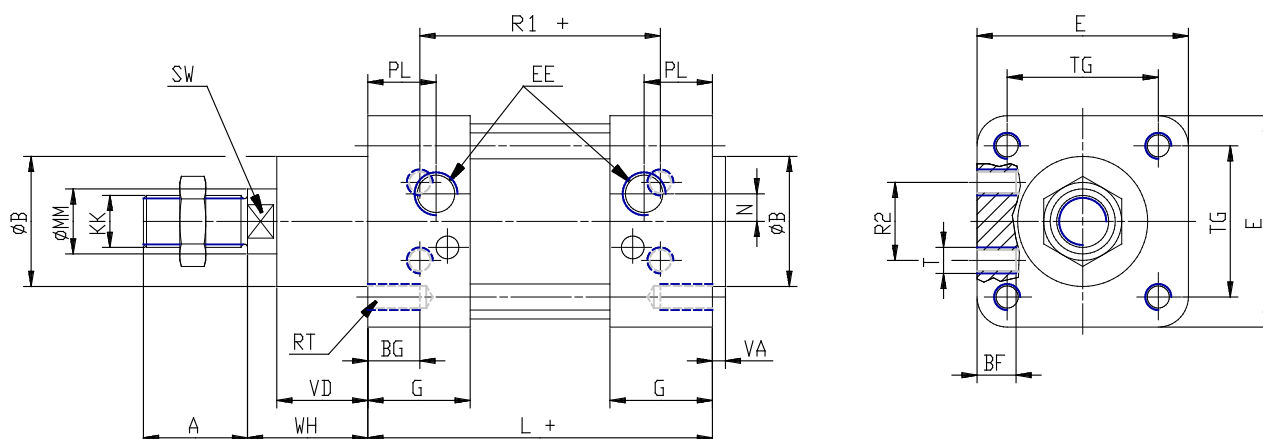


### TECHNICAL DATA

<b>Series</b>	90
<b>Diameter (mm)</b>	40
<b>Version</b>	M = standard magnetic
<b>Operation</b>	2 = double-acting (front and rear cush.)
<b>Materials</b>	A = stainless steel AISI 316 (SS 2343), joints NBR
<b>Construction</b>	A = standard
<b>Stroke type</b>	standard
<b>Stroke (mm)</b>	50
<b>rod seals viton</b>	-

## Stainless steel Cylinders (DIN/ISO 6431 - Series 90)

Product code: 90M2A040A0050



### DIMENSIONS

A (mm)	24
B (mm)	35
BG (mm)	16
BF (mm)	10
E (mm)	55
EE	G1/4
G (mm)	31.5
KK	M12x1,25
L (mm)	105
MM (mm)	16
N (mm)	5.5
PL (mm)	16
RT (mm)	M6
R1 (mm)	70
R2 (mm)	21
SW (mm)	13
T (mm)	M6
TG (mm)	38.0
VA (mm)	4
VD (mm)	22
WH (mm)	30
ZM (mm)	165