

Stainless steel Cylinders (DIN/ISO 6431 - Series 90)

Product code: 90M2A040A0400

Datasheet creation date: 07/03/2025 17:16

Check the most updated document online [click here](#)

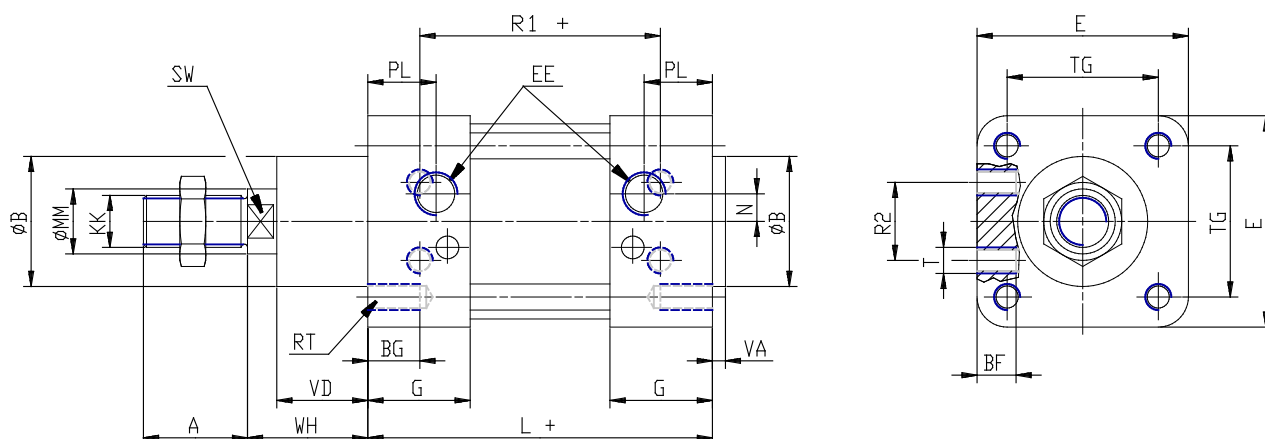


TECHNICAL DATA

Series	90
Diameter (mm)	40
Version	M = standard magnetic
Operation	2 = double-acting (front and rear cush.)
Materials	A = stainless steel AISI 316 (SS 2343), joints NBR
Construction	A = standard
Stroke type	standard
Stroke (mm)	400
rod seals viton	-

Stainless steel Cylinders (DIN/ISO 6431 - Series 90)

Product code: 90M2A040A0400



DIMENSIONS

A (mm)	24
B (mm)	35
BG (mm)	16
BF (mm)	10
E (mm)	55
EE	G1/4
G (mm)	31.5
KK	M12x1,25
L (mm)	105
MM (mm)	16
N (mm)	5.5
PL (mm)	16
RT (mm)	M6
R1 (mm)	70
R2 (mm)	21
SW (mm)	13
T (mm)	M6
TG (mm)	38.0
VA (mm)	4
VD (mm)	22
WH (mm)	30
ZM (mm)	165