

## Stainless steel Cylinders (DIN/ISO 6431 - Series 90)

Product code: 90M2A050A0370

Datasheet creation date: 07/03/2025 17:18

Check the most updated document online [click here](#)

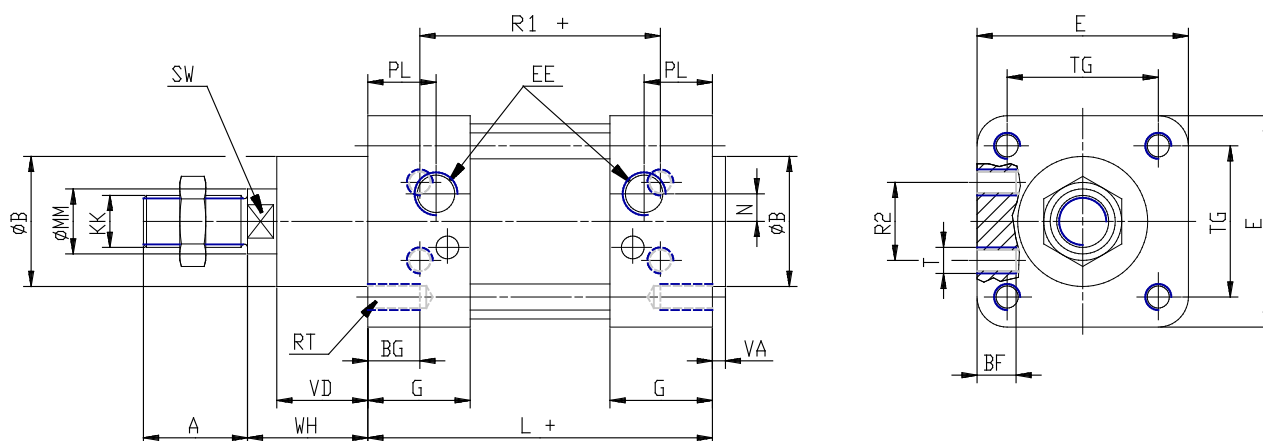


### TECHNICAL DATA

<b>Series</b>	90
<b>Diameter (mm)</b>	50
<b>Version</b>	M = standard magnetic
<b>Operation</b>	2 = double-acting (front and rear cush.)
<b>Materials</b>	A = stainless steel AISI 316 (SS 2343), joints NBR
<b>Construction</b>	A = standard
<b>Stroke type</b>	variable
<b>Stroke (mm)</b>	370
<b>rod seals viton</b>	-

## Stainless steel Cylinders (DIN/ISO 6431 - Series 90)

Product code: 90M2A050A0370



### DIMENSIONS

A (mm)	32
B (mm)	40
BG (mm)	16
BF (mm)	12
E (mm)	65
EE	G1/4
G (mm)	31.5
KK	M16x1,5
L (mm)	106
MM (mm)	20
N (mm)	8.5
PL (mm)	21
RT (mm)	M8
R1 (mm)	74
R2 (mm)	24
SW (mm)	17
T (mm)	M8
TG (mm)	46.5
VA (mm)	4
VD (mm)	28
WH (mm)	37
ZM (mm)	180