

## Stainless steel Cylinders (DIN/ISO 6431 - Series 90)

Product code: 90M2A063A0240V

Datasheet creation date: 07/03/2025 17:20

Check the most updated document online [click here](#)

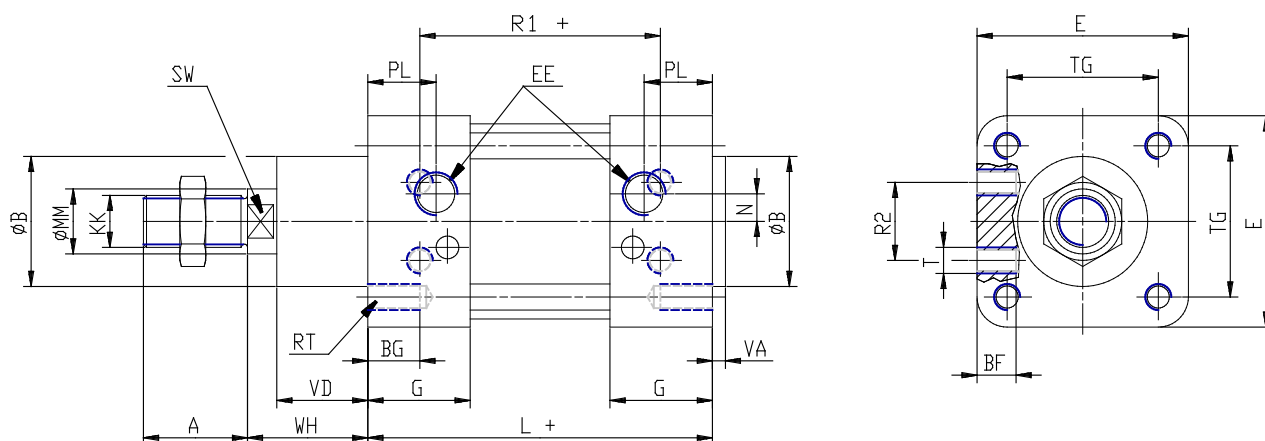


### TECHNICAL DATA

|                        |  |
|------------------------|--|
| <b>Series</b>          | 90   |
| <b>Diameter (mm)</b>   | 63   |
| <b>Version</b>         | M = standard magnetic                              |
| <b>Operation</b>       | 2 = double-acting (front and rear cush.)           |
| <b>Materials</b>       | A = stainless steel AISI 316 (SS 2343), joints NBR |
| <b>Construction</b>    | A = standard                                       |
| <b>Stroke type</b>     | variable   |
| <b>Stroke (mm)</b>     | 240  |
| <b>rod seals viton</b> | V = rod seals in viton                             |

## Stainless steel Cylinders (DIN/ISO 6431 - Series 90)

Product code: 90M2A063A0240V



### DIMENSIONS

|         |         |
|---------|---------|
| A (mm)  | 32      |
| B (mm)  | 45      |
| BG (mm) | 16      |
| BF (mm) | 12      |
| E (mm)  | 80      |
| EE      | G3\8    |
| G (mm)  | 35.0    |
| KK      | M16x1,5 |
| L (mm)  | 121     |
| MM (mm) | 20      |
| N (mm)  | 8.5     |
| PL (mm) | 22      |
| RT (mm) | M8      |
| R1 (mm) | 85      |
| R2 (mm) | 33      |
| SW (mm) | 17      |
| T (mm)  | M8      |
| TG (mm) | 56.5    |
| VA (mm) | 4       |
| VD (mm) | 28      |
| WH (mm) | 37      |
| ZM (mm) | 195     |