

## Stainless steel Cylinders (DIN/ISO 6431 - Series 90)

Product code: 90M2A063A0250

Datasheet creation date: 07/03/2025 17:20

Check the most updated document online [click here](#)

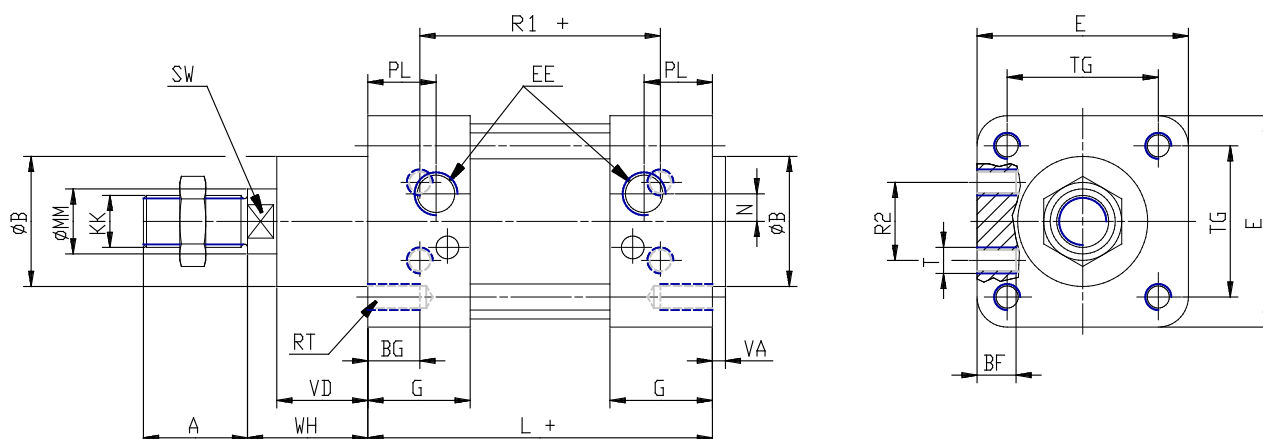


### TECHNICAL DATA

<b>Series</b>	90
<b>Diameter (mm)</b>	63
<b>Version</b>	M = standard magnetic
<b>Operation</b>	2 = double-acting (front and rear cush.)
<b>Materials</b>	A = stainless steel AISI 316 (SS 2343), joints NBR
<b>Construction</b>	A = standard
<b>Stroke type</b>	standard
<b>Stroke (mm)</b>	250
<b>rod seals viton</b>	-

## Stainless steel Cylinders (DIN/ISO 6431 - Series 90)

Product code: 90M2A063A0250



### DIMENSIONS

<b>A (mm)</b>	32
<b>B (mm)</b>	45
<b>BG (mm)</b>	16
<b>BF (mm)</b>	12
<b>E (mm)</b>	80
<b>EE</b>	G3/8
<b>G (mm)</b>	35.0
<b>KK</b>	M16x1,5
<b>L (mm)</b>	121
<b>MM (mm)</b>	20
<b>N (mm)</b>	8.5
<b>PL (mm)</b>	22
<b>RT (mm)</b>	M8
<b>R1 (mm)</b>	85
<b>R2 (mm)</b>	33
<b>SW (mm)</b>	17
<b>T (mm)</b>	M8
<b>TG (mm)</b>	56.5
<b>VA (mm)</b>	4
<b>VD (mm)</b>	28
<b>WH (mm)</b>	37
<b>ZM (mm)</b>	195