

Stainless steel Cylinders (DIN/ISO 6431 - Series 90)

Product code: 90M2A100A0260

Datasheet creation date: 07/03/2025 17:10

Check the most updated document online [click here](#)

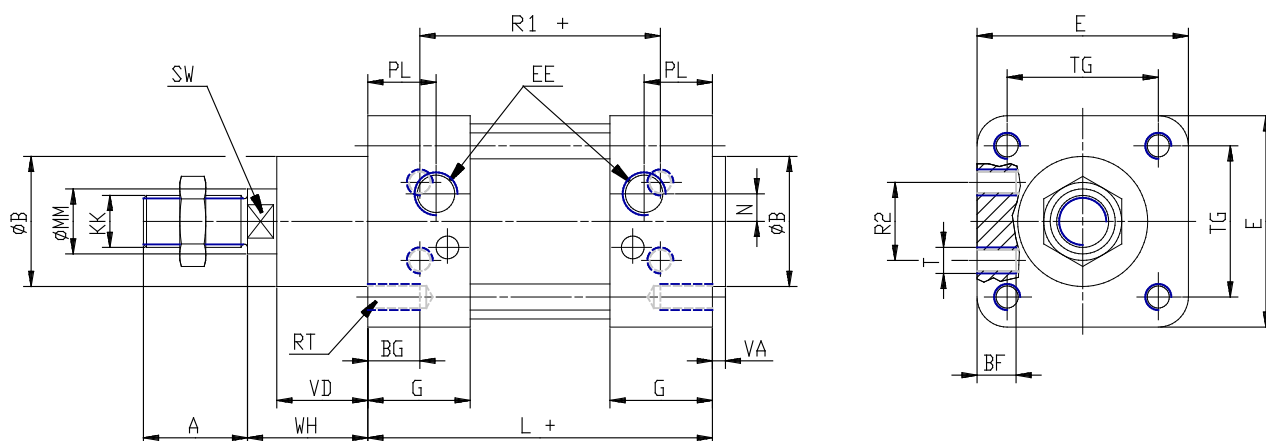


TECHNICAL DATA

| | |
|------------------------|----------------------------------------------------|
| Series | 90 |
| Diameter (mm) | 100 |
| Version | M = standard magnetic |
| Operation | 2 = double-acting (front and rear cush.) |
| Materials | A = stainless steel AISI 316 (SS 2343), joints NBR |
| Construction | A = standard |
| Stroke type | variable |
| Stroke (mm) | 260 |
| rod seals viton | - |

Stainless steel Cylinders (DIN/ISO 6431 - Series 90)

Product code: 90M2A100A0260



DIMENSIONS

| | |
|---------|---------|
| A (mm) | 40 |
| B (mm) | 55 |
| BG (mm) | 16 |
| BF (mm) | 15 |
| E (mm) | 115 |
| EE | G1\2 |
| G (mm) | 41.0 |
| KK | M20x1,5 |
| L (mm) | 138 |
| MM (mm) | 25 |
| N (mm) | 10.0 |
| PL (mm) | 26 |
| RT (mm) | M10 |
| R1 (mm) | 100 |
| R2 (mm) | 58 |
| SW (mm) | 21 |
| T (mm) | M10 |
| TG (mm) | 89.0 |
| VA (mm) | 4 |
| VD (mm) | 38 |
| WH (mm) | 51 |
| ZM (mm) | 240 |