

Stainless steel Cylinders (DIN/ISO 6431 - Series 90)

Product code: 90M2A100A0500

Datasheet creation date: 07/03/2025 17:11

Check the most updated document online [click here](#)

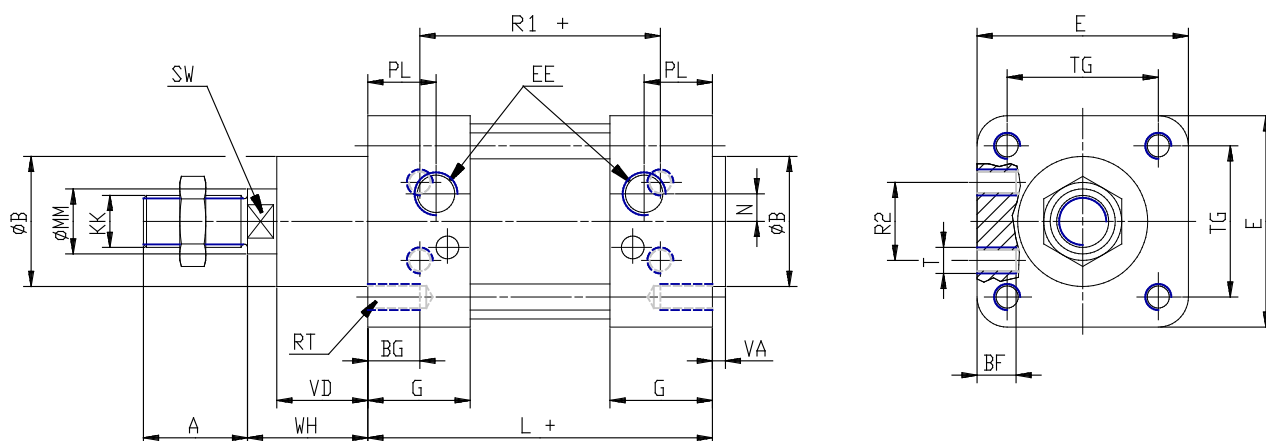


TECHNICAL DATA

Series	90
Diameter (mm)	100
Version	M = standard magnetic
Operation	2 = double-acting (front and rear cush.)
Materials	A = stainless steel AISI 316 (SS 2343), joints NBR
Construction	A = standard
Stroke type	standard
Stroke (mm)	500
rod seals viton	-

Stainless steel Cylinders (DIN/ISO 6431 - Series 90)

Product code: 90M2A100A0500



DIMENSIONS

A (mm)	40
B (mm)	55
BG (mm)	16
BF (mm)	15
E (mm)	115
EE	G1\2
G (mm)	41.0
KK	M20x1,5
L (mm)	138
MM (mm)	25
N (mm)	10.0
PL (mm)	26
RT (mm)	M10
R1 (mm)	100
R2 (mm)	58
SW (mm)	21
T (mm)	M10
TG (mm)	89.0
VA (mm)	4
VD (mm)	38
WH (mm)	51
ZM (mm)	240