

## Stainless steel Cylinders (DIN/ISO 6431 - Series 90)

Product code: 90M2A125A0100

Datasheet creation date: 07/03/2025 17:12

Check the most updated document online [click here](#)

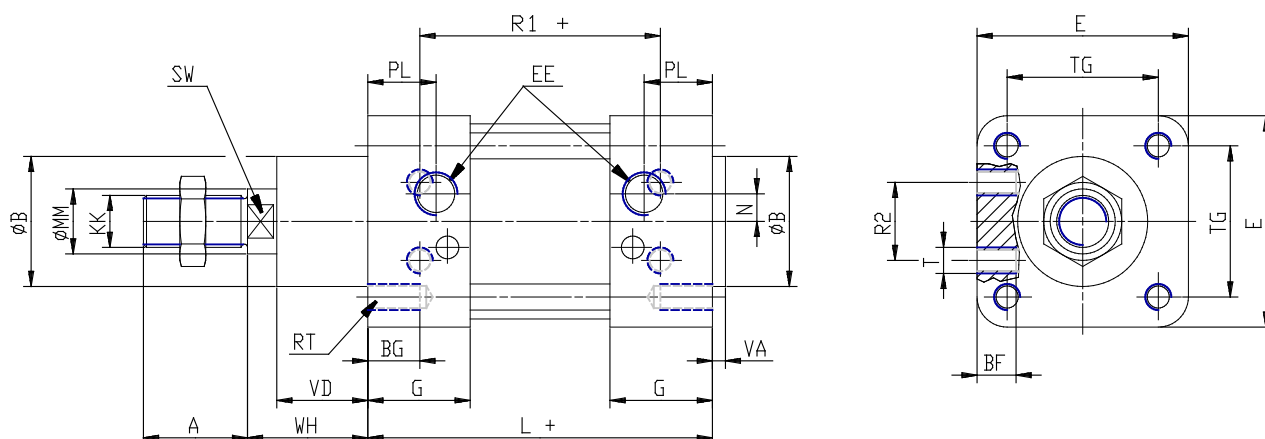


### TECHNICAL DATA

<b>Series</b>	90
<b>Diameter (mm)</b>	125
<b>Version</b>	M = standard magnetic
<b>Operation</b>	2 = double-acting (front and rear cush.)
<b>Materials</b>	A = stainless steel AISI 316 (SS 2343), joints NBR
<b>Construction</b>	A = standard
<b>Stroke type</b>	standard
<b>Stroke (mm)</b>	100
<b>rod seals viton</b>	-

## Stainless steel Cylinders (DIN/ISO 6431 - Series 90)

Product code: 90M2A125A0100



### DIMENSIONS

A (mm)	54
B (mm)	60
BG (mm)	20
BF (mm)	24
E (mm)	140
EE	G1/2
G (mm)	45.0
KK	M27x2
L (mm)	160
MM (mm)	32
N (mm)	12.5
PL (mm)	30
RT (mm)	M12
R1 (mm)	110
R2 (mm)	65
SW (mm)	27
T (mm)	M12
TG (mm)	110.0
VA (mm)	5
VD (mm)	50
WH (mm)	65
ZM (mm)	290