

Stainless steel Cylinders (DIN/ISO 6431 - Series 90)

Product code: 90M2A125A0150

Datasheet creation date: 07/03/2025 17:12

Check the most updated document online [click here](#)

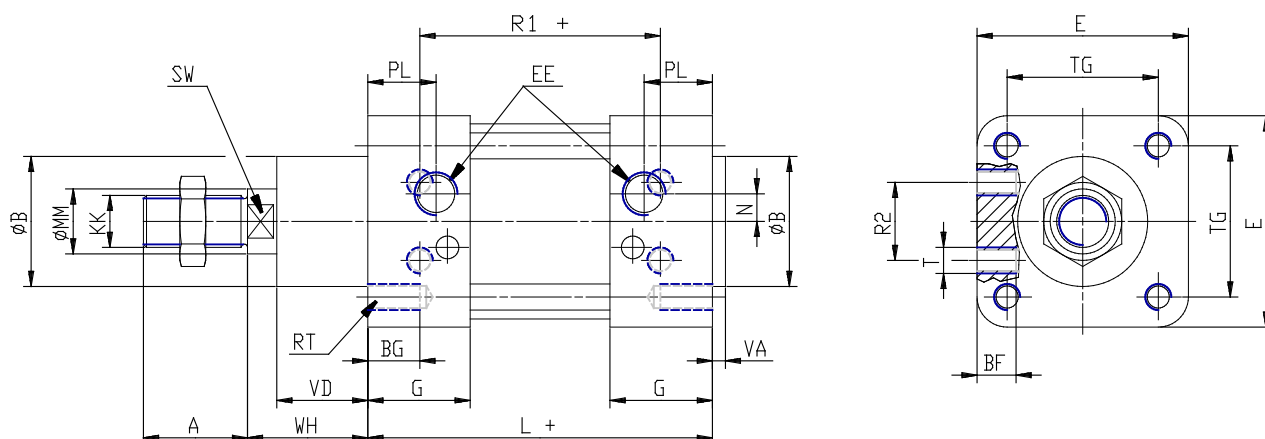


TECHNICAL DATA

Series	90
Diameter (mm)	125
Version	M = standard magnetic
Operation	2 = double-acting (front and rear cush.)
Materials	A = stainless steel AISI 316 (SS 2343), joints NBR
Construction	A = standard
Stroke type	standard
Stroke (mm)	150
rod seals viton	-

Stainless steel Cylinders (DIN/ISO 6431 - Series 90)

Product code: 90M2A125A0150



DIMENSIONS

A (mm)	54
B (mm)	60
BG (mm)	20
BF (mm)	24
E (mm)	140
EE	G1/2
G (mm)	45.0
KK	M27x2
L (mm)	160
MM (mm)	32
N (mm)	12.5
PL (mm)	30
RT (mm)	M12
R1 (mm)	110
R2 (mm)	65
SW (mm)	27
T (mm)	M12
TG (mm)	110.0
VA (mm)	5
VD (mm)	50
WH (mm)	65
ZM (mm)	290