

## Stainless steel Cylinders (DIN/ISO 6431 - Series 90)

Product code: 90M2V080A0060

Datasheet creation date: 07/03/2025 17:23

Check the most updated document online [click here](#)

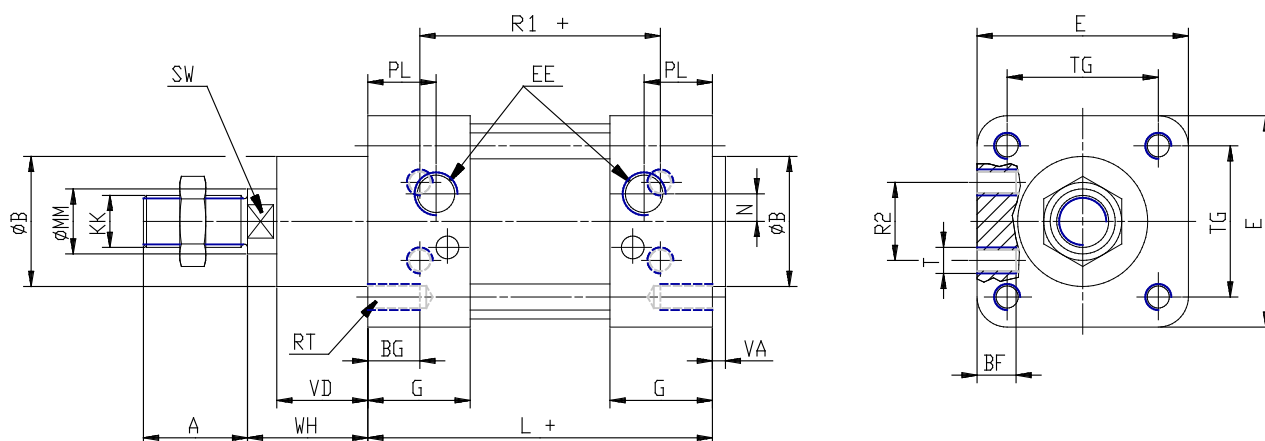


### TECHNICAL DATA

|                        |   |
|------------------------|---|
| <b>Series</b>          | 90  |
| <b>Diameter (mm)</b>   | 80  |
| <b>Version</b>         | M = standard magnetic                                       |
| <b>Operation</b>       | 2 = double-acting (front and rear cush.)                    |
| <b>Materials</b>       | V = stainless steel AISI 316 (SS 2343), all joints in viton |
| <b>Construction</b>    | A = standard  |
| <b>Stroke type</b>     | variable  |
| <b>Stroke (mm)</b>     | 60  |
| <b>rod seals viton</b> | -   |

## Stainless steel Cylinders (DIN/ISO 6431 - Series 90)

Product code: 90M2V080A0060



### DIMENSIONS

|         |         |
|---------|---------|
| A (mm)  | 40      |
| B (mm)  | 45      |
| BG (mm) | 16      |
| BF (mm) | 15      |
| E (mm)  | 95      |
| EE      | G3\8    |
| G (mm)  | 36.0    |
| KK      | M20x1,5 |
| L (mm)  | 128     |
| MM (mm) | 25      |
| N (mm)  | 8.5     |
| PL (mm) | 23      |
| RT (mm) | M10     |
| R1 (mm) | 92      |
| R2 (mm) | 34      |
| SW (mm) | 21      |
| T (mm)  | M10     |
| TG (mm) | 72.0    |
| VA (mm) | 4       |
| VD (mm) | 34      |
| WH (mm) | 46      |
| ZM (mm) | 220     |