

Stainless steel Cylinders (DIN/ISO 6431 - Series 90)

Product code: 90M6A032A0060

Datasheet creation date: 07/03/2025 17:15

Check the most updated document online [click here](#)

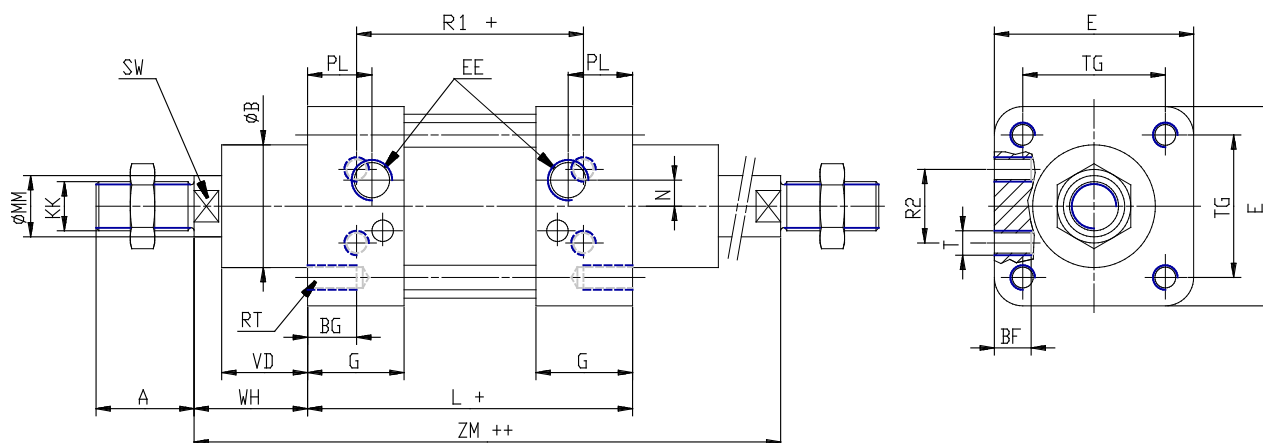


TECHNICAL DATA

Series	90
Diameter (mm)	32
Version	M = standard magnetic
Operation	6 = double-acting (through-rod with front and rear cushions)
Materials	A = stainless steel AISI 316 (SS 2343), joints NBR
Construction	A = standard
Stroke type	variable
Stroke (mm)	60
rod seals viton	-

Stainless steel Cylinders (DIN/ISO 6431 - Series 90)

Product code: 90M6A032A0060



DIMENSIONS

A (mm)	22
B (mm)	30
BG (mm)	16
BF (mm)	10
E (mm)	45
EE	G1/8
G (mm)	28.0
KK	M10x1,25
L (mm)	94
MM (mm)	12
N (mm)	4.5
PL (mm)	14
RT (mm)	M6
R1 (mm)	64
R2 (mm)	16
SW (mm)	10
T (mm)	M5
TG (mm)	32.5
VA (mm)	4
VD (mm)	20
WH (mm)	26
ZM (mm)	146