

Stainless steel Cylinders (DIN/ISO 6431 - Series 90)

Product code: 90M6A032A0075

Datasheet creation date: 07/03/2025 17:15

Check the most updated document online [click here](#)

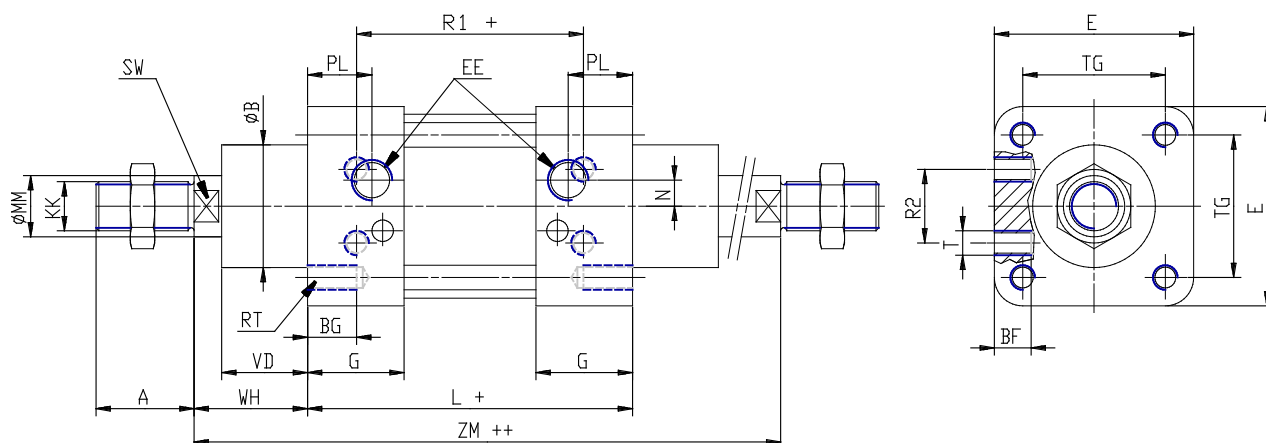


TECHNICAL DATA

| | |
|------------------------|--|
| Series | 90 |
| Diameter (mm) | 32 |
| Version | M = standard magnetic |
| Operation | 6 = double-acting (through-rod with front and rear cushions) |
| Materials | A = stainless steel AISI 316 (SS 2343), joints NBR |
| Construction | A = standard |
| Stroke type | standard |
| Stroke (mm) | 75 |
| rod seals viton | - |

Stainless steel Cylinders (DIN/ISO 6431 - Series 90)

Product code: 90M6A032A0075



DIMENSIONS

| | |
|---------|----------|
| A (mm) | 22 |
| B (mm) | 30 |
| BG (mm) | 16 |
| BF (mm) | 10 |
| E (mm) | 45 |
| EE | G1/8 |
| G (mm) | 28.0 |
| KK | M10x1,25 |
| L (mm) | 94 |
| MM (mm) | 12 |
| N (mm) | 4.5 |
| PL (mm) | 14 |
| RT (mm) | M6 |
| R1 (mm) | 64 |
| R2 (mm) | 16 |
| SW (mm) | 10 |
| T (mm) | M5 |
| TG (mm) | 32.5 |
| VA (mm) | 4 |
| VD (mm) | 20 |
| WH (mm) | 26 |
| ZM (mm) | 146 |