

Stainless steel Cylinders (DIN/ISO 6431 - Series 90)

Product code: 90M6A063A0100

Datasheet creation date: 07/03/2025 17:21

Check the most updated document online [click here](#)

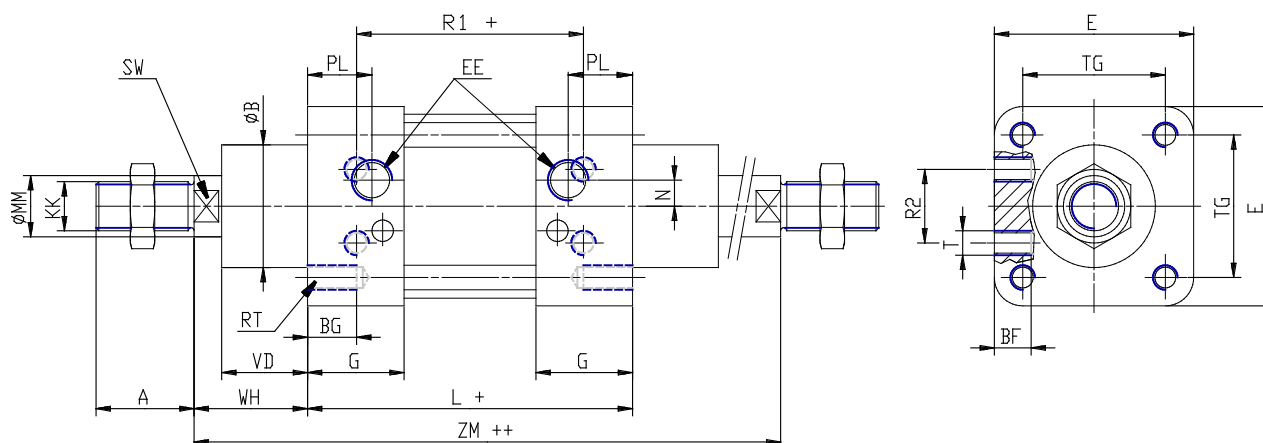


TECHNICAL DATA

Series	90
Diameter (mm)	63
Version	M = standard magnetic
Operation	6 = double-acting (through-rod with front and rear cushions)
Materials	A = stainless steel AISI 316 (SS 2343), joints NBR
Construction	A = standard
Stroke type	standard
Stroke (mm)	100
rod seals viton	-

Stainless steel Cylinders (DIN/ISO 6431 - Series 90)

Product code: 90M6A063A0100



DIMENSIONS

A (mm)	32
B (mm)	45
BG (mm)	16
BF (mm)	12
E (mm)	80
EE	G3\8
G (mm)	35.0
KK	M16x1,5
L (mm)	121
MM (mm)	20
N (mm)	8.5
PL (mm)	22
RT (mm)	M8
R1 (mm)	85
R2 (mm)	33
SW (mm)	17
T (mm)	M8
TG (mm)	56.5
VA (mm)	4
VD (mm)	28
WH (mm)	37
ZM (mm)	195