

5/2-way valves, ISO 1, ISO 2, ISO 3, monostable, bistable - Series 9

Product code: 952-000-34

Datasheet creation date: 10/03/2025 12:04

Check the most updated document online [click here](#)

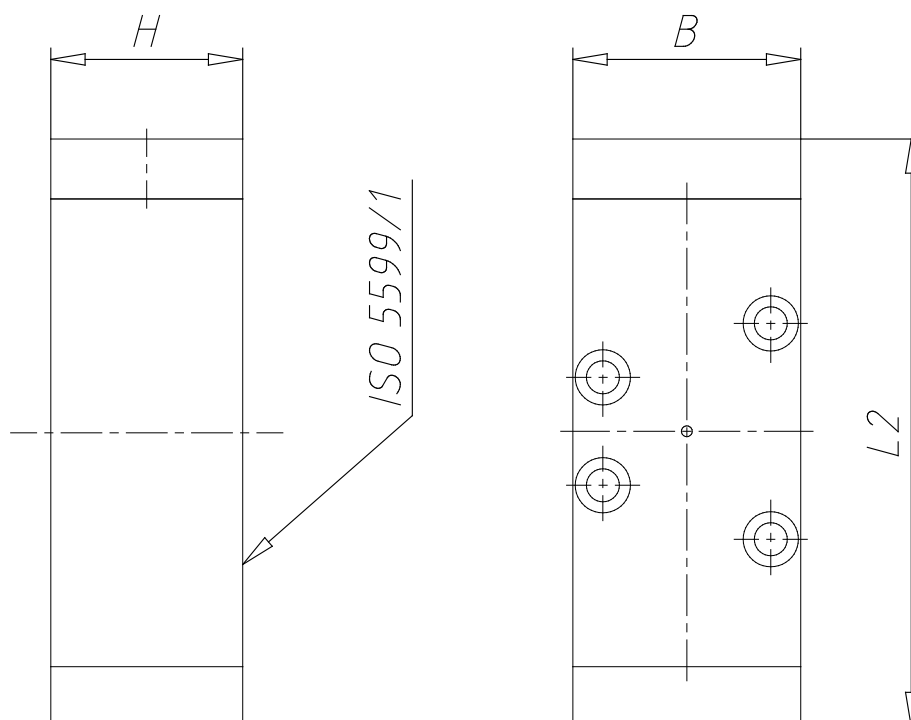


■ TECHNICAL DATA

Mod.	952-000-34
Size ISO	2

5/2-way valves, ISO 1, ISO 2, ISO 3, monostable, bistable - Series 9

Product code: 952-000-34



DIMENSIONS

B (mm)	51
L2 (mm)	118
H (mm)	33