

2/2 and 3/2-way solenoid valves - Mod. A32 - A33

Product code: A333-1C2

Datasheet creation date: 10/03/2025 11:28

Check the most updated document online [click here](#)

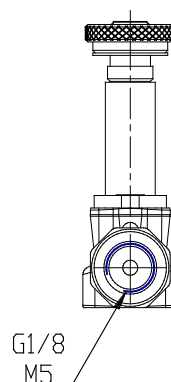
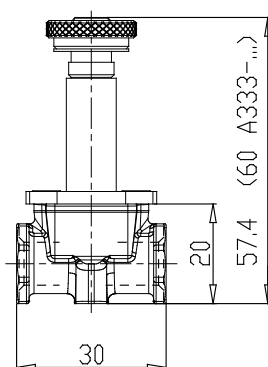
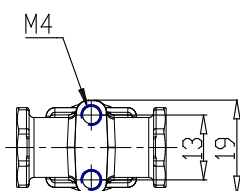


TECHNICAL DATA

SERIE (Series)	A
CORPO (Body design)	3 = corpo filettato
NUMEROVIE (Number of ports)	3 = 3 vie
FUNZIONE (Function)	3 = NO IN-LINE - normalmente aperta
CONNESSIONI (Connections)	1 = G1/8
DIAMETRO (Nominal diameter)	C = Ø 1.2 - 1.4 - 1.5 mm
MATERIALE (Body material)	2 = ottone nichelato - ottone brunito - alluminio

2/2 and 3/2-way solenoid valves - Mod. A32 - A33

Product code: A333-1C2



DIMENSIONS

SERIE (Series)	A
CORPO (Body design)	3 = corpo filettato
NUMEROVIE (Number of ports)	3 = 3 vie
FUNZIONE (Function)	3 = NO IN-LINE - normalmente aperta
CONNESSIONI (Connections)	1 = G1/8
DIAMETRO (Nominal diameter)	C = Ø 1.2 - 1.4 - 1.5 mm
MATERIALE (Body material)	2 = ottone nichelato - ottone brunito - alluminio