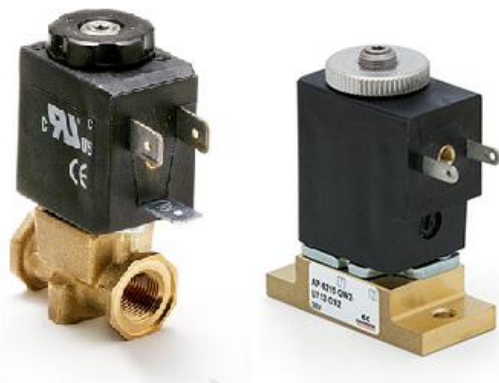


## Proportional valve- 22mm - Series AP

Product code: AP-7211-NR2-U711

Datasheet creation date: 10/03/2025 11:07

Check the most updated document online [click here](#)

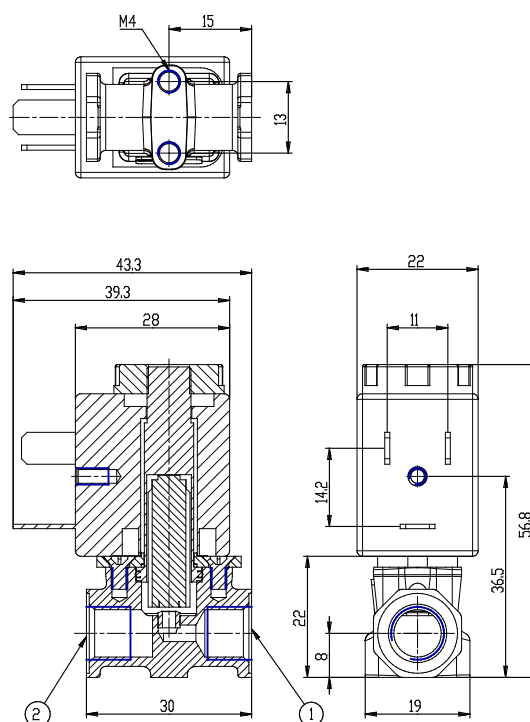


### TECHNICAL DATA

<b>Series</b>	AP
<b>Body</b>	7= size 22mm
<b>Number of ways</b>	2= 2way
<b>Function</b>	1= NC
<b>Connection</b>	1= G1/8
<b>Nominal diameter (mm)</b>	N= Ø 2 mm
<b>Seals material</b>	R= NBR
<b>Body material</b>	2= BRASS
<b>Encapsulating material</b>	U= PET
<b>Dimensions of the solenoid (mm)</b>	7= 22x22 DIN 43650 B
<b>Solenoid voltage (V DC)</b>	11= 24 V DC 6.5W
<b>Coil orientation</b>	= fastons opposite pneumatic doors, same output side
<b>Version</b>	= uncertified version
<b>Kv (l/min)</b>	1.700
<b>Max pressure (bar)</b>	5.000
<b>Max flow (Nl/min)</b>	135.000

## Proportional valve- 22mm - Series AP

Product code: AP-7211-NR2-U711



### DIMENSIONS

<b>Series</b>	AP
<b>Body</b>	7= size 22mm
<b>Number of ways</b>	2= 2way
<b>Function</b>	1= NC
<b>Connection</b>	1= G1/8
<b>Nominal diameter (mm)</b>	N= Ø 2 mm
<b>Seals material</b>	R= NBR
<b>Body material</b>	2= BRASS
<b>Encapsulating material</b>	U= PET
<b>Dimensions of the solenoid (mm)</b>	7= 22x22 DIN 43650 B
<b>Solenoid voltage (V DC)</b>	11= 24 V DC 6.5W
<b>Coil orientation</b>	= fastons opposite pneumatic doors, same output side
<b>Version</b>	= uncertified version
<b>Kv (l/min)</b>	1.700
<b>Max pressure (bar)</b>	5.000
<b>Max flow (Nl/min)</b>	135.000