

Wide Opening Parallel Gripper - Series CGLN

Product code: CGLN-25-050

Datasheet creation date: 10/03/2025 02:31

Check the most updated document online [click here](#)

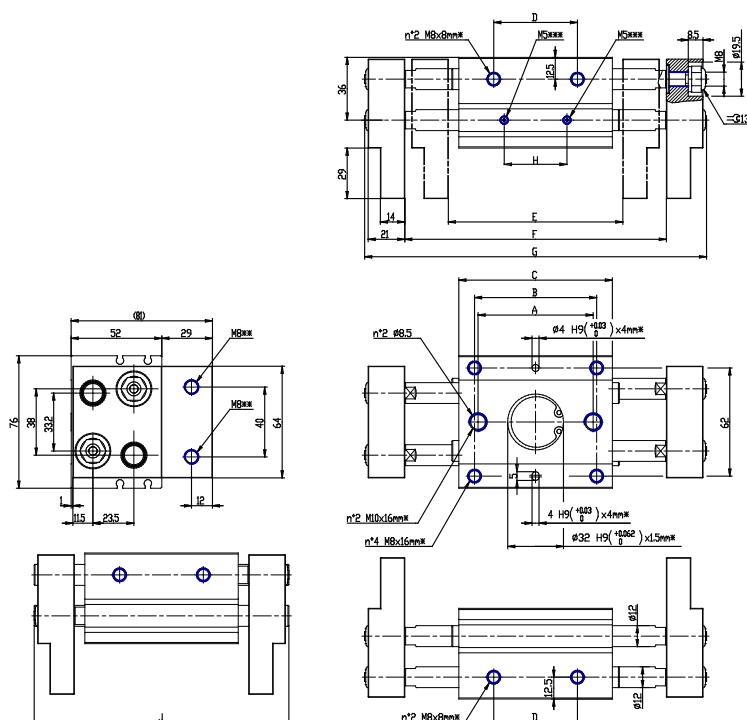


TECHNICAL DATA

Mod.	CGLN-25-050
Bore (mm)	25
Stroke (mm)	50

Wide Opening Parallel Gripper - Series CGLN

Product code: CGLN-25-050



DIMENSIONS

A (mm)	66
B (mm)	70
C (mm)	88
D (mm)	48
E (mm)	100
F (mm)	150
J (mm)	146
G (mm)	196
H (mm)	36
Frequency (1/min)	60
Weight (g)	1670