

## Wide Opening Parallel Gripper - Series CGLN

Product code: CGLN-25-100

Datasheet creation date: 10/03/2025 02:31

Check the most updated document online [click here](#)

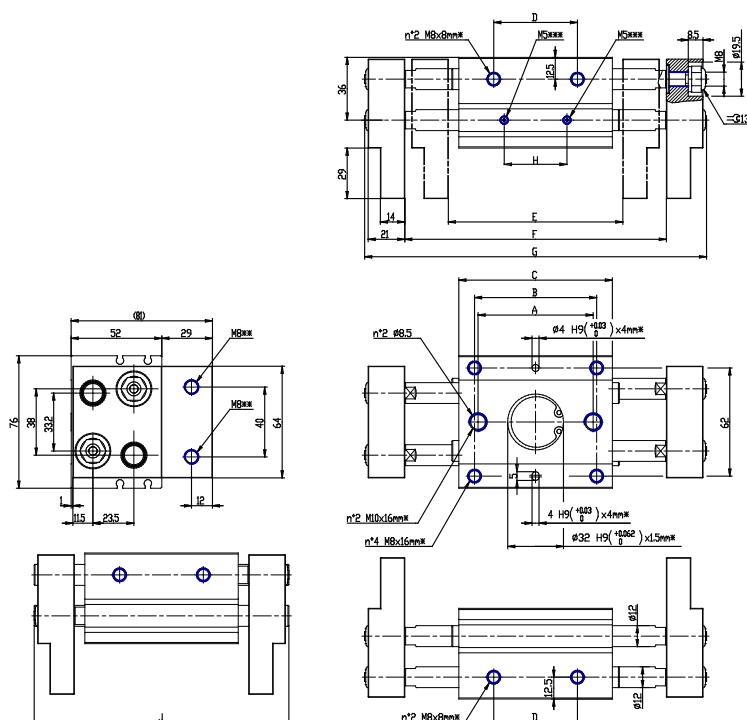


### TECHNICAL DATA

<b>Mod.</b>	CGLN-25-100
<b>Bore (mm)</b>	25
<b>Stroke (mm)</b>	100

## Wide Opening Parallel Gripper - Series CGLN

Product code: CGLN-25-100



### DIMENSIONS

<b>A (mm)</b>	120
<b>B (mm)</b>	124
<b>C (mm)</b>	142
<b>D (mm)</b>	102
<b>E (mm)</b>	182
<b>F (mm)</b>	282
<b>J (mm)</b>	244
<b>G (mm)</b>	328
<b>H (mm)</b>	90
<b>Frequency (1/min)</b>	40
<b>Weight (g)</b>	2415