

Self-centering parallel grippers - Series CGPL

Product code: CGPL-16-16

Datasheet creation date: 10/03/2025 02:31

Check the most updated document online [click here](#)

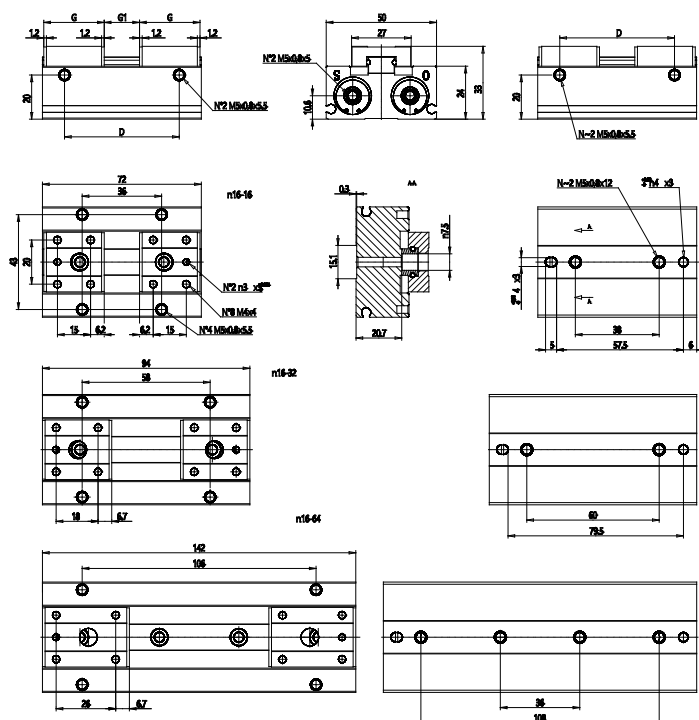


TECHNICAL DATA

| | |
|-------|------------|
| Model | CGPL-16-16 |
|-------|------------|

Self-centering parallel grippers - Series CGPL

Product code: CGPL-16-16



DIMENSIONS

| | |
|---------------------------------|---------|
| G (mm) | 25 |
| D (mm) | 52 |
| Opening / Closing force jaw (N) | 90 |
| Working pressure (bar) | 1,5-7 |
| Working temperature (°C) | 5-60 |
| Repeatability (mm **) | +/-0.05 |
| Max use frequency (Hz) | 2 |
| Weight (kg) | 0.344 |