

Valves and solenoid valves - Series EN

Product code: EN531-16-W53

Datasheet creation date: 20/05/2026 06:50

Check the most updated document online [click here](#)

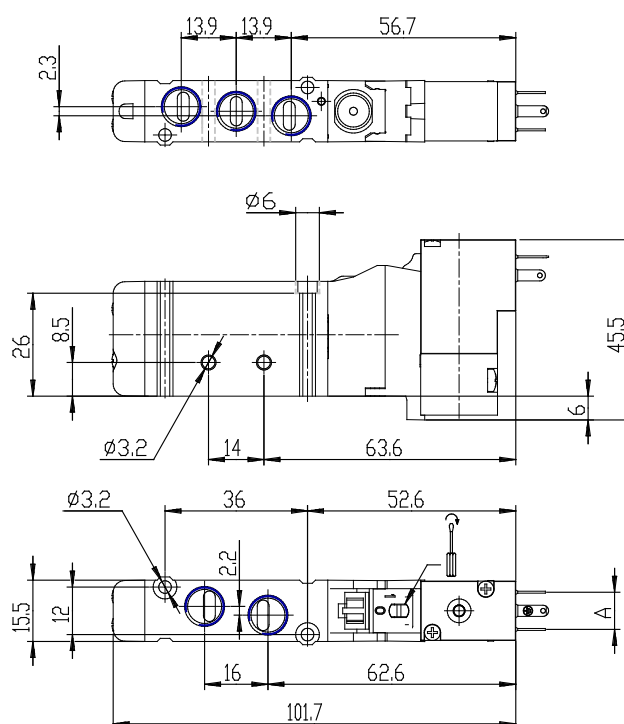


TECHNICAL DATA

| | |
|-------------------------|------------------------------------|
| Series | EN |
| Function | 5 = 5/2 (5 ports/2 positions) |
| Size | 3 = size 16 |
| Body type (mm) | 1 = body with threaded ports |
| Operation | 16 = electro-pneumatic, monostable |
| Type of solenoid | W53 = 24V DC - 2W |

Valves and solenoid valves - Series EN

Product code: EN531-16-W53



DIMENSIONS

| | |
|-------------------------|------------------------------------|
| Series | EN |
| Function | 5 = 5/2 (5 ports/2 positions) |
| Size | 3 = size 16 |
| Body type (mm) | 1 = body with threaded ports |
| Operation | 16 = electro-pneumatic, monostable |
| Type of solenoid | W53 = 24V DC - 2W |